

Same trusted magazine,  
new look and feel!

November 2024

FREE monthly community magazine  
for Massey to Hobsonville Point

# The Westerly

- Safer communities
- Home & garden
- Health & beauty
- Property market report

Ladies' Night at Mitre 10  
MEGA Westgate





## Greetings

How good would it be if we could stop feeling pressured when comparing ourselves with others. We are each unique, and we should nurture our own personal growth and development, treating ourselves with the same kindness and compassion we would show a friend in a similar situation. Gratitude for our own qualities, experiences and accomplishments is better than carrying the burden of what we think we lack that other people have.

The Japanese have a word for this philosophy, Oubaitori, the spirit of non-comparison. Our goal should be to live our authentic selves, to find purpose in our actions while also embracing all aspects of our lives, including our failures and weaknesses. By acknowledging our experiences and the role they play in shaping our unique paths, we develop greater resilience and self-assurance. Of course we will encounter people who are more intelligent, richer and more beautiful, but why do we end up comparing ourselves with them? Enjoy a fulfilling life by doing what is right for us, and our immediate family and friends. Capitalise on our strengths. As Steve Jobs said, "Have the courage to follow your heart and intuition; they somehow already know what you truly want to become."

In the communities covered by the Westerly's area we can nurture our own capabilities, complementing those around us. We have our own Heroes in Hobsonville. In addition neighbours there can meet and gather together for shared meals. Save the date to enjoy the creativity of the community-led Art Trail, with over 80 local artists contributing, and now back for its second year and all the events are free. Hard work and community action are restoring a stream devastated by Cyclone Gabrielle. A number of these activities and events benefit from the engagement of local schools, the communities of the future. Read how creative and satisfying the art of repair can be, countering the assumptions of a throwaway society. Find out how community development and engagement is being developed locally by people working together. See what is being done to prevent elder abuse. Celebrate the victory of light over darkness with the local Diwali festival, and look forward to a night of fun with Ladies' Night at Mitre 10 MEGA.

Enjoy all our community activities this November.

John, Editor



## What's inside

- 3 People & Places
- 9 Safer Communities
- 10 Community News
- 15 Food & Beverage
- 17 Property Hub
- 19 Property News
- 24 Property Statistics
- 26 Hot Property
- 28 G.J. Gardner
- 30 Property Market
- 41 Home & Garden
- 49 Young Learners
- 51 Aged Care
- 53 Health & Beauty
- 57 Area Columnists

Circulation is 10,000 print copies and 3371 opened and read email copies. Editorial contributions are free from cost. Advertising starts at \$100 plus gst for a business card size.

### ENQUIRIES / FEEDBACK:

John Williamson  
P 021 028 54178  
E jbw51red@googlemail.com  
W www.thewesterly.co.nz

COVER PHOTO: Mitre 10  
PRINT RUN: 10,000 copies, Treehouse Print  
EMAIL DATABASE: Sublime NZ

DISCLAIMER: Articles published are submitted by individual entities and should not be taken as reflecting the editorial views of this magazine or the publishers of the Westerly Limited.

Articles are not to be re-published unless written consent is granted from the publisher (Graham McIntyre).



THEWESTERLY.CO.NZ

## People & Places

### Empowering Women One Project at a Time: Ladies' Night at Mitre 10 MEGA Westgate

Once again, Mitre 10 MEGA Westgate is creating a space where women can embrace their inner DIY enthusiast. The upcoming Ladies' Night event promises an evening that is not only about shopping, but also about learning, empowerment, and fun. Whether you are an experienced craftswoman or someone who's never picked up a hammer, this event is designed to make every woman feel at home in the world of tools and home improvement.

One of the highlights of the event is building your own planter box! With the assistance from the Massey Men's Shed representatives and Mitre 10 MEGA staff to help guide you, these skills will help you when covering basics of home repairs and woodworking. It is not just about education, it's about creating a supportive environment where questions are encouraged, and confidence grows with every new skill learned.

But the evening is not just about skills, it's a celebration. Guests will be treated to complimentary drinks and snacks, making it easy to mix and mingle with fellow



attendees. Special in-store discounts will offer exclusive access to tools, décor, and home improvement materials, so ladies can stock up on everything they need for their next big project.

Throughout the evening, participants will have the chance to collect giveaways and enter to win fabulous prizes.

For those who want to step into the world of home improvement with confidence, make connections, and walk away with both new skills and friendships, Ladies' Night is an opportunity that should not be missed.

## Quality Steel Sheds, Designed for You.

Lifestyle & Residential Sheds, Farm Sheds,  
Commercial & Industrial Buildings

- Tailored to your specific needs
- Built up to 30m wide (span) and 7m stud height
- Made with .40-gauge steel roof and cladding for lasting durability
- Designed and engineered in NZ for your environment
- Building consent process handled by our team
- Locally owned and operated in Kumeu

KiwiSpan Kumeu  
329 Main Road,  
Huapai, Auckland 0810

0800 870 078  
09 412 8455

www.kiwispans.co.nz  
kumeu@kiwispans.co.nz





Mitre 10 MEGA Westgate is more than just a store—it is a community, and this event is an invitation to all women to take part, learn, and get inspired.

Join us for Ladies' Night on 20 November 2024, from 7pm to 9.30pm, at Mitre 10 MEGA Westgate, Northside Drive Whenuapai.

Entry \$10 per person with proceeds going to Back 2 School Project. Register in store or online for Ladies' Night at [mitre10.co.nz/mega-westgate](https://mitre10.co.nz/mega-westgate)

It is time to unleash your DIY potential!

## House of Travel



House of Travel Hobsonville Travel Agency + Cruise Centre

It's been an exciting month for us as we opened our second location (just 100m up the road) which specialises in cruises. At the Cruise Centre, Sam and Talita have been meeting some wonderful new people and helping them to find the perfect cruise options based on expectations,

experiences, and budget. There is just no need to click and hope on the internet, when you can work with real people, located in a place you can visit, who care about you and your holidays. Equally we have our main travel agency which is part of the most awarded group in New Zealand. Not only do we employ seven people across both stores, but this year have won multiple awards within the travel industry for the agency, the owner, and the team. This includes:

- Winner of the National Travel Industry Award for Resilience and Entrepreneurial Spirit.
- #1 for Customer Experience\*2024 Kantar Customer Leadership Index Survey.
- #1 Best Places to Work \*large business category. With the security of a physical store, experienced consultants, 100% Kiwi business owner operated and TAANZ bonding, who better to be your local travel agent wingman? Your ideas + our knowledge = better holidays. So, are you ready to set sail, hit the road or cross the sky on an unforgettable adventure? Contact us today and

**HOUSE OF TRAVEL**  
**HOBSONVILLE**  
 Cnr Hobsonville Point Rd & De Havilland Rd  
 09 416 0700 • [hobsonville@hot.co.nz](mailto:hobsonville@hot.co.nz)

let's start planning your dream holiday.

House of Travel Hobsonville 225 Hobsonville Point Road  
 09 416 0701 House of Travel Hobsonville Cruise Centre, 144  
 Hobsonville Point Road. 09 416 0702

## Waitakere Grey Power

Waitakere Grey Power Association had a General Members Meeting on 27th September 2024, held at the Te Atatu South Community Centre. Our guests were Imogen and three other ladies from the SPCA who had two lovely rescue puppies with them in the room. The SPCA re-houses pets when people pass away and family members may not want to adopt the cat or dog. Desley Simpson, Deputy Mayor of Auckland Council, was our other guest speaker and spoke about the Council's 2024/25 Budget and the 6.8 per cent property rates increase for 2024/25, and the Council Ten Year Plan. The meeting was most enjoyable having rescue puppies to play and spoil. Desley thoroughly enjoyed our meeting as did all members present. We will hold our Dinner for our Office volunteers and the Committee in early December. We have had an increase in new members of over 45 new members in the past three months. Please contact our Office, Monday to Friday 9.00am to 12.00pm, please phone 09 8385207 if you have any enquiries. Wishing all members and friends A Merry Christmas and A Happy and Prosperous New Year 2025. Written by Mate Marinovich, President, Waitakere Grey Power Association, Office 247 Edmonton Rd, Te Atatu South 0652 Auckland.

## Hobsonville Heroes

Hobsonville Heroes is back and is promising another great opportunity to get up close with our emergency services and their vehicles & equipment as well as to enjoy a wide range of community activities, performances and food trucks. The free event, run by Connected Neighbourhoods Trust, is being held on Sunday 17 Nov, 11am to 1.30pm at Scott Point School. Please walk, scooter or cycle to the event if possible as parking in Scott Point will be limited.



## NOR-WEST AND KUMEU GLASS SERVICES

"Specialists in Windscreens & Glazing"

Some of our services include: Residential and Commercial Glass Repairs - Automotive Glass Repairs - Cat/Dog Door Installs - Splashbacks - Mirrors - Picture Frames - Double Glazing - Caravan and Boat Windows - Car and Truck Mirror Repairs - Stonechips

CALL - 09 412 9914 | [nwkg@xtra.co.nz](mailto:nwkg@xtra.co.nz)  
 9a Weza Lane, Kumeu, Auckland 0810

## Hobsonville Point Art Trail returns with over 80 artists showcasing local creativity



The highly anticipated ArtPoint Art Trail is back for its second year, showcasing the incredible creativity of Onekiritia Hobsonville Point with more than 80 local artists participating. Running on Sunday 23 November 10am-4pm, this community-led initiative has quickly established itself as a hub for artistic expression, solidifying

Hobsonville Point's reputation as a thriving centre for creative talent.

Following the success of last year's inaugural event, the 2024 ArtPoint Art Trail promises to be bigger and better, with a diverse range of artwork, including painting, sculpture, ceramics, live music, photography, digital media, woodworking and more. With such a strong turnout of local artists for its second year, it's clear that the Point is emerging as a creative powerhouse.

A key highlight this year is the strong participation from students and teachers at Hobsonville Point Secondary School, whose contributions bring a vibrant energy to the trail. Their works reflect the next generation of artistic voices and demonstrate the value of local arts education.

This year, an ArtPoint HQ will be located at Chichester Cottage. It's an ideal starting point for visitors and also provides a pitstop along the way. ArtPoint HQ has accessible bathroom and kitchen facilities, making it a convenient space to relax and recharge. Additionally, HQ will feature an exciting display from Fairyz Point's new maker, James Atkinson, and sculptures by renowned artist Chris Van Doren.

Run by a team of passionate volunteers, all events are free. You can add your support by purchasing one of a

limited run of ArtPoint totes featuring the iconic Wasp Hangar roofline logo and target pin-drop <https://artpoint.co.nz/product/artpoint-tote/>

Printed maps of the ArtPoint Art Trail will be available on the day at Chichester Cottage and from all participating artists and venues.

For more information or a digital map visit [artpoint.co.nz](https://artpoint.co.nz)

## Massey Birdwood Settlers Hall - Bookings



As we head towards Christmas, there appears to be an increase in people wanting to use the hall.

As many people know, the Massey Birdwood Settlers Hall was built in

1956 by the Massey Birdwood Settlers Association. It is a community hall and is not supported by the Council (many of our competing halls are council-owned), nor is it a school-owned hall.

In 1956, few schools had their own hall, while many areas of Auckland lacked the infrastructure and the resources to own and operate a hall. When the hall was planned in the 1950s, Auckland had borough Councils, such as Henderson Borough Council and Glen Eden Borough Council. Those councils concentrated on providing residents and ratepayers with the basics, such as water, sewage, roads, and footpaths, and things like libraries were few and far between.

The Association, a resident and ratepayers' group, had within its constitution an objective to work with local Councils and the Government to provide residents with resources (like a hall), in this case, Massey, with infrastructure like a Community Hall.

The hall was built, and its operation is funded by rents from the hall hire and grants from Lotto and T.T.C.F.

The hall has several regular users, like the kindergarten, all on not-for-profit groups, and their rents do not meet the running costs of the hall, like insurance, water use,

**Geoff Dobson**  
 MEDIA  
 P 027 757 8251  
 E [geoffdobson2017@gmail.com](mailto:geoffdobson2017@gmail.com)

**QUALITY WATER SUPPLIES**  
**7 DAYS PHONE NOW!**  
 Bev & Andrew Speedy  
 Registered by Ministry of Health & Auckland Council  
 Fresh Water Supplies  
 Ph. **411.8116** Txt **027.345.3805**



power, repairs, maintenance, and auditing fees.

People wanting to hold a function must book to use the hall, and there is a lead time and various conditions to ensure that the hall is available for regular users and other people. On the front of the hall, the Trusts kindly paid for a sign to encourage people to email the hall requesting its use. Those requests need to follow a process.

If you would like to use the hall or its side room the Den, especially on a long-term basis, write to the Secretary, John Riddell, by emailing [masseybirdwood@gmail.com](mailto:masseybirdwood@gmail.com), provide the date and time you are after, full name, organisation you represent (if any), phone number, email address and physical address.

## Catalina Bay Pet Day



Get ready for another fun-filled Pet Day down at Catalina Bay Market. Join the fun once again for these competitions: Best dressed doggy and Best dressed doggy and owner look alike. Competition starts at 11.30am. We'll also have Sally from Zoo Ventures, look, touch and learn. Much fun to be had, see you there.

**HOBSONVILLE NEW ZEALAND**  
**CATALINA BAY FARMERS MARKET**  
**HOBSONVILLE POINT**

# CATALINA BAY Pet Day

**Saturday November 16 | 8.30am to 2pm**

**Best Dressed Dog & Dog owner look alike Competition | Zoo Ventures | Boutique Pet Vendors | Live Music | Food Stalls**

**Catalina Bay Farmers Market**  
**1 Hudson Bay Road, Hobsonville**

## Parakai School students bring stories, songs, and smiles to Craigweil House



Every week, Craigweil House Home and Hospital welcomes the heartwarming presence of students from Parakai School. These regular visits have become a cherished tradition, where the students share poems and stories with the elderly residents, creating a special bond between generations.

The children bring their enthusiasm to the rest home, reading a mix of well-known poems and stories as well

**COME VISIT OUR UNIQUE BOUTIQUE RURAL CARE FACILITY**

*You're welcome to come in for a cuppa and see us or ring us today to discuss a complimentary day stay*

Situated on the Twin Coast Discovery Highway off State Highway 16 within reach of Muriwai Beach and the Kaipara Coast.

A caring environment nurtured by our dedicated team  
 Rest Home • Hospital • Secure Dementia • Day Stays

**NO PREMIUM ROOM CHARGES**

**Craigweil House**  
 Home & Hospital  
 FEEL AT HOME WITH FAMILY

**HENRIKWEST**  
 CARE GROUP

09 420 8277 | 143 Parkhurst Rd, Parakai | [info@craigweilhouse.co.nz](mailto:info@craigweilhouse.co.nz)



as their own creative works. Occasionally, they treat the residents to songs, filling the halls with music and laughter.

In return, some of the residents who are able take part by reading stories to the children, creating a wonderful back-and-forth of stories

and experiences. These visits aren't just about entertainment—they provide a meaningful way for both the students and the residents to connect, share, and brighten each other's day.

For the residents, it's a highlight of their week, providing a sense of connection and engagement with the younger generation. Meanwhile, the students learn about empathy, patience, and the value of listening to the stories of their elders.

This wonderful partnership between Parakai School and Craigweil House continues to strengthen the ties within the community, with every visit bringing smiles and creating lasting memories.

If you're looking for a caring and engaging environment for yourself or a loved one, we invite you to come and see what we do at Craigweil House Home and Hospital. We'd love to show you around and share how we create memorable experiences for our residents.

Ph 09 420 8277

## Hobsonville Diwali Festival 2024

**BlingonPoint - Sat 9th Nov**

Hello, Namaste, Welcome to HOBSONVILLE DIWALI FESTIVAL 2024. This year, for the first time, it is outdoors - by the waterfront. Saturday 9th November 5.00 PM - 10.00 PM at Catalina Bay Farmers Markets, by the waterfront.

A fun fusion of cuisines and creativity, HOBSONVILLE DIWALI

**FreshChoice Waimauku**  
 A-2 Waimauku Retail Centre  
 5-19 Factory Road  
 Waimauku, Auckland  
 Phone: (09) 411 7890/411 9495  
 Fax: (09) 411 8050  
 Mobile: 021 048 3355  
 Email: [waimauku.fc@xtra.co.nz](mailto:waimauku.fc@xtra.co.nz)



FESTIVAL brings it all together - Food Trucks, Kids Activity Play Zone, Fashion Show for Pets, Music, Song and Dance Performances by talented artistes - with the energetic Ella Kumar as MC.

A true celebration of culture and community, Hobsonville Diwali - in its 7th year - is a much-anticipated, colourful, cheerful annual event that is diverse and inclusive - for & by people from across the city, all regions & religions, all ages & abilities, all ethnicities... Save the date! Spread the word. Put on your blingiest outfit and come join the fun and festivity at the Festival of Lights - along with your friends & neighbours, family & whanau - pets included. In advance, a very Happy Diwali. Everyone is invited. All are welcome.

Truly, it takes a village! Hobsonville Diwali Event is brought to life, thanks to: Upper Harbour Local Board, Hobsonville Point Residents Society (HPRS), Connected Neighbourhoods Trust, Catalina Bay Farmers Markets, local schools - Hobsonville Point Secondary, Primary & Scott Point Schools and the Hobsonville Diwali Event organising team: Craig Shearer, Patrick Lai, Richard Taylor, Gavin Gunston, Jaimini Joshi, Shefali Kothari, Nikita Naidu, Rachel Schneidermann, Karlene & Terry Toomey, Dee and Amar Trivedi. Find & link to the Facebook event - Hobsonville Diwali Festival 2024 - #BlingonPoint

<https://www.facebook.com/events/1019063369813407/>

# PET PATCH

**Your Local Pet Store**

320 Main RD Huapai  
 09 412 2009  
[www.petpatch.co.nz](http://www.petpatch.co.nz)

100% NZ Owned



# Auckland Rangatahi Celebrated at Graeme Dingle Foundation's National Excellence Awards



The Graeme Dingle Foundation, a positive youth development charity, celebrated its National Excellence Awards at the Hyundai Marine Sports Centre on October 17th. This event highlighted the achievements of tamariki, rangatahi, staff, and volunteers who have shown outstanding courage, resilience, and leadership over the past year.

Among the award winners was Auckland's Cruz Iako from Tangaroa College, who received the Project K Excellence Award. Project K, the Foundation's flagship programme, builds confidence through wilderness adventures, community challenges, and mentoring.

Reflecting on the experience, Cruz shared, "The camp on Great Barrier Island pushed me out of my comfort zone. Hiking through rough terrain and working as a team taught me skills for life."

Two other Auckland students, Grace Motusaga from Kelston Girls College and Inga Hiko from Tamaki College, were recognised with the Stars Outstanding Contribution from a Peer Mentor Award. Grace's speech touched on her growth as a leader, stating, "I had a fear of opening up to others, but the Stars programme helped me evolve

into a better leader. I hope to inspire future Pasifika leaders."

The Foundation's youth development programmes each played a pivotal role in the success stories celebrated, highlighting the diverse ways the Foundation equips young people with the skills and resilience needed to thrive.

Foundation CEO Jo Malcolm-Black says "Change isn't linear and it doesn't follow a schedule set by

others. This event is a powerful reminder of what is possible when we give young people the

tools and opportunities to realise their potential. Tamariki and rangatahi are the changemakers of tomorrow, and their journeys inspire us all to continue working towards a brighter future. The role of supporters is to give rangatahi the biggest shout out we can, in whatever way we can."

Jo Malcolm-Black invites the public to celebrate the National Excellence Awards winners and support the Graeme Dingle Foundation's ongoing work by visiting [dinglefoundation.org.nz](http://dinglefoundation.org.nz)

## The Rodney Youth Project



The Rodney Youth Project, a new initiative by the Rodney Local Board is calling on young people, local artists, musicians, community organisations and groups who would like to collaborate with us to deliver new and exciting youth programmes. In particular we are looking for activities that:

are youth initiated or led involves youth in the delivery or design supports and grows rangatahi maori activates or uses community spaces

Do you have an idea for a workshop or event ?Please get in contact with us to discuss your ideas:

[priscilla@rodneyyouth.co.nz](mailto:priscilla@rodneyyouth.co.nz)

See more info on our website: [www.rodneyyouth.co.nz](http://www.rodneyyouth.co.nz)



## ARTISAN KITCHENS

**KITCHENS / WARDROBES / VANITIES**

**Call Anthony for your FREE quote**

**021 924 417** [artisankitchens.co.nz](http://artisankitchens.co.nz)






**Grant Castle**

P (09) 412 8239 | 106 Main Road, Kumeu  
M 027 299 7054 | [E.castlepanelbeating@orcon.net.nz](mailto:E.castlepanelbeating@orcon.net.nz)

# Safer Communities



Type of extinguisher	Types of fire					
	Flammable solids e.g. paper, plastic, wood	Flammable liquids e.g. paint, petrol, oil	Flammable gases e.g. butane, CNG, LPG	Flammable metals e.g. titanium, magnesium	Electrical equipment e.g. cables, computers, switchboards	Cooking oils and fats e.g. chip pans, fryers
	Class A	Class B	Class C	Class D	Class E	Class F
Water	Green	Red	Red	Red	Red	Red
Wet chemical	Green	Red	Red	Red	Red	Green
Foam	Green	Red	Red	Red	Red	Red
Dry powder	Green	Green	Green	Yellow	Yellow	Yellow
Carbon dioxide	Green	Green	Green	Red	Red	Red

Key:   
■ Recommended Most effective on this type of fire.   
■ Limited May be effective on small fires of this type.   
■ Not Suitable Not effective on this type of fire.

Fire extinguishers play a pivotal role in domestic and industrial fire suppression and hopefully put out a fire before it gets too large to control.

There are many different sizes and types available for purchase across NZ but it is critical to ensure that the correct extinguisher is selected for the fire type you may encounter.

There is no NZ standards approved 'General Purpose' extinguisher. To use the wrong extinguisher may make the situation worse or can put you and your family in further danger.

The more common type of extinguisher is the ABE or more often referred to as 'Dry powder' and suited to fires from woods, cardboards etc.

Carbon Dioxide (CO2) is a common type which is used around electrical fires as it does not have the residue etc left behind that may cause further damage to electrical componentry.

Other types of extinguishers are available and should be located around your home and placed according to the potential risk, ie, Wet Chem extinguisher in the kitchen for grease, cooking oil or fat fires.

**What about extinguisher for Lithium-ion batteries?**

This is a common question that gets raised and what extinguisher will put this out.

To cut it short, there isn't one. Currently there is no extinguisher available that will put out an active lithium-ion battery fire. Any product that is saying meets the required NZ standards to do so is false. Once a lithium-ion battery enters thermal runaway it is extremely difficult to stop.

This highlights the importance of ensuring any batteries or rechargeable items are well cared for and that

chargers are checked and not used if either is showing any signs of damage.

When charging these products, ensure that they are done so in an environment that will not cause any other items to catch fire and has a smoke alarm (preferably interconnectable) in the room to alert you as early as possible should something go so your family can evacuate and get to a safe meeting place and call for assistance by dialing 111 from a mobile phone.



**Jamie Shaw**  
Deputy Chief Fire Officer  
Waitakere Fire Brigade  
Phone 09 810 9251

## Don't have a lifejacket?

## You can borrow one from us.

*Anyone can drown. No one should.*



**Drowning Prevention Auckland**

**DPA Lifejacket Hubs**

Wearing a correctly fitted lifejacket increases your chance of survival if you end up in the water. Borrow a lifejacket from a DPA Lifejacket Hub to help keep yourself and your loved ones safer while enjoying the waters.

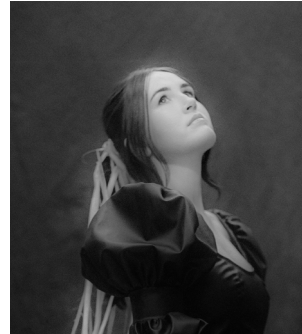
[dpanz.org.nz/lifejacket-hub](http://dpanz.org.nz/lifejacket-hub)



**Safer Boating**



## Auckland Folk Festival returns January 2025



The Auckland Folk Festival is back to full strength at the Kumeu Showgrounds on January 24-27 (Auckland Anniversary weekend) next year following the “wobbly years” of COVID-19 and the January 2023 floods, say organisers. Tickets go on sale mid-September, with early bird tickets closing December 31, 2024.

The music line-up for the 2025 festival includes Australia’s “sister” duo Charm of Finches, Hina - Auckland songwriter Amy Boroevich (Te Rarawa, Ngati Raukawa), Aotearoa Music Awards 2024’s Best Folk Artist Adam McGrath, Pony Baby (Arahi and Jazmine Mary), Austral (Australia), Rain of Animals (Scotland and Australia), Fortino Trio (Australia), BB and Alex (USA/NZ), Tess Liautaud and Jessie Shanks (US/NZ), Tall Folk (US/NZ), Krissy Jackson, and Kiwi indie group Marmalade. The festival, which has been going more than 50 years, features music, dance, craft workshops and concerts - across multiple stages, along with food trucks.

“We’re back,” says Auckland Folk Festival Programme and Artist Coordinator Emily Roughton. “We can’t wait to bring a jam-packed lineup to the festival which celebrates and brings together the folk community, and equally pushes the boundaries of folk. “We’re delighted to be showcasing some amazingly talented locals, along with some really quality international acts.”

Other performers include The Barleysakes (Australia), Basant Madhur Ensemble, Hannah Morrell (Australia), Lizzie Flynn and the Runaway Trains (Australia), Medena Ensemble, OriginZ, Rasoul Abbasi Ensemble, Sounds of the Cedar Forest, and Tom Rodwell, with more acts to be announced. Music ranges from gypsy to indie and blues to bluegrass. A huge kids’ programme is planned too, with a dedicated kids’ stage. Large marquees provide shade, and plenty of campsites are available.

Visit [www.aucklandfolkfestival.co.nz](http://www.aucklandfolkfestival.co.nz) for more information.

## Cat lovers we need your help



The NZ Cat Foundation has a sanctuary based in Huapai which houses over 150 cats. We offer safe sanctuary for older, disadvantaged and un-homeable rescue cats where

they can live out their lives in safety and comfort. We need regular volunteers to help with routine chores so our cats can enjoy happy, healthy, safe lives. We are looking for volunteers who are mature, have a sense of responsibility, are good team players and dedicated animal lovers. Helping at the sanctuary is a popular way to fulfil community service hours for Duke of Edinburgh, St John’s, Scouts, Guides, church, university, animal sciences studies, etc. We are happy to sign off on your hours and provide any needed verification of your service. We rely heavily on volunteers on a daily basis and desperately need more.

Financial and food donations are also urgently needed to cover vet and other costs associated with our sanctuary. The NZ Cat Foundation also supports community Trap-Neuter-Return programmes and helps feed and care for many cats living in the community. Please visit our website for more information on volunteering and how to donate at [www.thenzcatfoundation.org.nz](http://www.thenzcatfoundation.org.nz). You can also email - volunteers: [volunteer@thenzcatfoundation.org.nz](mailto:volunteer@thenzcatfoundation.org.nz) donations: [info@thenzcatfoundation.org.nz](mailto:info@thenzcatfoundation.org.nz)

## New Kaipara sculpture exhibition opens December 1

Kaipara Coast Plant Centre opens its Sculpture Gardens Exhibition on Sunday December 1, 2024, from 2pm to 5pm.

Each year the 40 sculptures created by local and

## Community News

overseas artists are replaced and remain on continual display for the following year.

Kaipara Coast Plant Centre encourages family and their friends to come along for this year’s grand opening of the new exhibition for 2025 and be among the first to see the new artworks along the kilometre of garden trails.

“There will also be opportunities to mingle with the artists as well as drinks, nibbles and live music to enjoy,” organisers say. A 2.5km nature trail is available for people to explore too.

“This is set in the lovely Kaipara countryside and placed so as to blend sympathetically with the surrounding environment and offering some great views of the Kaipara”, organisers say, adding the nature trail and Sculpture Gardens are a great way for all the family to spend a fun and relaxing afternoon as there’s also an extensive children’s play area and a barbecue site within the gardens. A coffee shop is on site plus the Plant Centre to browse through.

“Our knowledgeable and friendly staff will also be on hand to help with any garden related questions,” say organisers, adding that the trails are unsuitable for wheelchairs and walking frames.

The Kaipara Coast Plant Centre is at 1481 State Highway 16, about 4km north of Kaukapakapa.

Visit [www.kaiparacoast.co.nz](http://www.kaiparacoast.co.nz) or phone (09) 420 5655 for more information.

## November at Kumeu Arts



We’re excitedly preparing for our biggest exhibition of the year, the Kumeu Arts Awards. We’ll have a huge range of artworks on display highlighting artists from all over NZ. Local businesses have donated prizes to be awarded on November 2nd. Pop in to see who wins and choose your favourite in the ‘People’s Choice Award’. On Saturday the 30th of November between 11 am -3 pm, we’re holding a Makers Market. Come along to buy hand-made gifts directly from our ‘Makers’ stalls. Shop ethically while supporting local people. Or, why not buy a loved one a voucher for one of our ceramics courses? As the silly season gets underway find some peace by visiting our galleries or calm down during one of our stress-relieving workshops. We’re here to help. Find information @ [www.kumeuarts.org](http://www.kumeuarts.org) or pop in to see us behind the Library.

**KUMEU ARTS**

**MAKERS MARKET**

**SAT NOV 30TH**

**11AM-3PM**

**BUY HAND-MADE GIFTS DIRECTLY FROM OUR MAKERS**

**@ KUMEU ARTS BEHIND LIBRARY**

**Team Terry Jones**  
Residential Lifestyle Specialists  
North-West

Get in contact for a **free** appraisal today!

 Terry and Janet Jones  
+ 64 27 492 529  
E: [terry.jones@nzsir.com](mailto:terry.jones@nzsir.com) New Zealand 

Each Office Is Independently Owned and Operated. NZSIR North Limited (licensed under the REAA 2008) MREINZ

  
**NORTH CITY ELECTRICAL**

**We're your local Heat Pump installers!**

Get in touch with us today to book in for a free measure & quote.  
With great prices & five-star reviews, you can't go wrong!

[www.northcityelectrical.co.nz](http://www.northcityelectrical.co.nz) [office@northcityelectrical.co.nz](mailto:office@northcityelectrical.co.nz)



# Kumeu Book Fair November 23 & 24



The fairs rely on books donated by the community and people's generosity is very much appreciated, says a Huapai-Kumeu Lions spokesperson.

"It is an opportunity for people to cull their bookshelves or other places where books have accumulated over time, although old or tatty books are not wanted as they do not sell."

Good quality books are set out in categories on tables, including gardening, cooking, sport, travel, biographies, and many other subjects as well as soft and hard covered novels.

All books are \$2 with special prices for bundles of children's books. "There is something of interest for everyone, making a visit to the fair a good family outing," says the spokesperson.

The fortnight before the fair donated books can be left on a table outside the Lions' Den Kumeu Community Centre front entrance for Lions to uplift daily.

Profit from previous Book Fairs as well as funding from the Lions' Vintage Shop at the adjacent Pomona Hall have enabled the club to give financial support to several local groups. These include an Invictus Games team based at Whenuapai, the Kumeu Band and a dog rehabilitation centre.

Students from Matua Ngaru School were also supported by the club donating some excess books for a recent student run mini-Book Fair.

The Huapai-Kumeu Lions Club is giving financial support to students organising the Kumeu Kids Christmas Fair the Kumeu Community Centre on Saturday December 7.

The club has a dinner meeting at the Kumeu Community Centre on the first and third Tuesday of every month and recently introduced several new members.

All welcome.

Phone (09) 412-7752 for information.

## The Village Market Helensville Showgrounds



Sunday 17th November 8.30am to 1pm

Locally made crafts, art and gifts, fresh locally grown fruit & veg, preserves, plants, pet products and much more. Delicious food from the market cafe, coffee, sausage sizzle and ice cream. Plus there's live music from duo Gillian & Mike and free hair plaiting

Can't make it on Sunday? - then join us on Friday 6 December from 4pm to 8pm at our very festive Twilight Christmas Market. Fantastic Christmas gift ideas, food trucks, live music from The Curls and much more plus Santa will be popping in to see if you've been naughty or nice.....

**VODANOVICH**  
LAW

SALES & PURCHASE OF REAL ESTATE  
RELATIONSHIP PROPERTY | BUSINESS STRUCTURES  
POWERS OF ATTORNEY | WILLS & TRUSTS  
COMPANY & EMPLOYMENT LAW

---

PLEASE CONTACT IVAN | [ivan@vlaw.co.nz](mailto:ivan@vlaw.co.nz) 09 412 8000  
4a Shamrock Drive Kumeu, Auckland

No dogs please with the exception of assistance dogs. Gold coin donation for parking - proceeds to the Helensville/Kaukapakapa scouts and St John youth. For more information contact [sarah@riversidecrafts.co.nz](mailto:sarah@riversidecrafts.co.nz)

## Used spectacles wanted for Pacific Islands

Huapai-Kumeu Lions and Riverhead Scouts also participate in a project whereby donated used glasses are processed and checked in New Zealand and then offered to Pacific Island eye clinics. Many island residents with visual impairment are unable to afford or access glasses, Lions say.

A receptacle for people to put in glasses they no longer use will be at the Lions' Book Fair on November 23 and 24.

## SeniorNet Meetings

We have been busy the last few months; we have had some interesting speakers coming to the club. First our local Librarian came and gave us a talk on all the library services they offer. The following month we had a talk on Auckland history especially the Fencibles. Both meetings were well attended and our members seemed to enjoy. As well as the talks we learnt a lot about the future of technology and one of our members gave us a talk on the future of Artificial Intelligence. He also gave us a live demonstration on what it can do which was quite outstanding. As usual we are running two courses every month on different subjects which are very popular with our members. If you would like to come and see what we are all about why don't you come along to one of our meetings. We meet the first Wednesday of the month at 10am in St. Chads church hall. I hope to see you then.

Regards, Nigel Dempster

## Gently Loved Markets

Gently Loved Markets Flea Market returns to Hobsonville Point for its final Flea Market of 2024 on Saturday 30th

**HUAPAI  
VetClinic**

Dr Gary Duggal (BVSc)

+ (09) 412 2223  
+ 371 main road. Huapai  
+ huapaivet@gmail.com



November. Perfect timing to stock up on preloved treasures for Xmas or to clear out around your home for a bit of extra holiday spending money.

Flea Market is an indoor garage sale filled with preloved treasures at significantly reduced prices. Explore stalls selling preloved clothing, accessories, books, games, records, plants, home grown produce, homewares and more.

Gently Loved Markets Flea Market is on Saturday 30th of November from 10am until 1pm at The Sunderland Lounge - Te Rere, Hobsonville Point. Free entry. Come have a preloved treasure hunt with us. Don't forget your fabric bag on the day.

Having a declutter around the house? Come sell with us. Contact Donna Buchanan on [gentlylovedmarkets@gmail.com](mailto:gentlylovedmarkets@gmail.com) to book a stall. Gently Loved Markets hold different of styles of market days - from curated preloved, Curvy (size 16+ / XL+), Teens (8-16 year olds), Flea Market and Just Kids! Keep an eye on their Facebook and Instagram for the market day announcements @gentlylovedmarketsnz

## North West Country Inc

North West Country supported two major art events in the area this year, celebrating our many talented artists. Arts in the Ville in Helensville was huge hit this year, with more artists than ever. Held on Labour Weekend, the North West Country business hub at Mill Road opened its doors and hosted four local artists. Art is a big part of our local area, and the business hub has a number of art pieces on its walls from local artists so it was a fitting location.

On Saturday 2nd November, the Kumeu Arts Centre held its annual Kumeu Art Awards and as sponsors, North West Country was delighted to present the second prize award. All the entries were incredible and we congratulate all artists who took part.

**CHRISTMAS  
SHOP DECORATING COMPETITION**

Get those Christmas decorations out and get creative. Let's show visitors that the North West is the best place for Christmas cheer.

Results will be announced on Saturday 14 December.

**2 x \$1500 cash prizes to be won!**

Register your business and see full terms and conditions at [www.northwestcountry.co.nz](http://www.northwestcountry.co.nz)

North West COUNTRY BUSINESS ASSOCIATION

**KEMP BARRISTERS & SOLICITORS**  
*Your local team of legal experts*

- Property Law
- Litigation
- Family & Relationship Law
- Trust & Asset Protection
- Wills & Estates
- Commercial Law

K

info@kempsolicitors.co.nz  
09 412 6000  
25 Oraha Road, Kumeu



Christmas is just around the corner and we are looking forward to having a cracking time. We have a lot of things on the go for everyone to enjoy, including our business members.

November is also the launch month for our annual Christmas Shop Decorating Competition. This is open to all North West Country members and every entrant has an opportunity to win one of two \$1500 cash prizes. Our two winners last year were so elated to be chosen from all the entrants, and a lovely cash bump made it even better.

All businesses who want to take part in the competition need to register, then across the months of November and December we will keep an eye on your business and watch the decorations go up. Our judge will head out in December to make their choices, and the winners will be announced on Saturday 14th December.

Don't forget, please come to me with any questions, ideas, issues, or support that you might need. I am here to help. Danielle Hancock, Business Manager Manager@northwestcountry.co.nz

## Waitakere Forest and Bird Lecture Series



Thursday 21st November 7.30 pm

Ruby Moore is a freshwater ecologist who has a particular interest in the streams and waterways around the Auckland region. During her career, she has worked with many school and community groups to raise awareness of the natural environment through education and citizen science. In her current role as Entomology Collection Manager she has been adding the Freshwater Invertebrate collection. Recently this has included the contributing to the eDNA project, to add new specimens to the eDNA library. Venue: Ranui Community Centre 474 Swanson Rd, Ranui. Non members welcome, join us for supper after to chat with other like-minded people, free but koha appreciated to cover hall hire.

For further information ph Liz 0274 762732 lizanstey@hotmail.com

## C'mon Hobby, Let's Reconnect



"C'mon Hobby, Let's Reconnect" is being facilitated again by Connected Neighbourhoods Trust and runs through to June 2025. They provide \$100 local food vouchers to any streets, laneways or blocks in the Hobsonville area that want to get together for a neighbours gathering. Super easy and great way to connect with your neighbours and embrace community. Minimum of 10 households (although a \$50 voucher is available for between 5-10 households). More info at [neighbourhoods.nz/connect](http://neighbourhoods.nz/connect)

## Children's Market at Scott Point School



During the school holidays, young entrepreneurs from the Scott Point community came together to sell their pre-loved toys, clothes and other exciting items that some of them had made themselves.

Navya who was one of the stall holders sold some of her original creations at her NS Creations stall. The children were supported by their parents and the day was a great success with many people from Scott Point and Hobsonville enjoying getting some great bargains. Local Mum, Mrs. Christina Yan who had the original idea to run the Children's Market is hoping to hold the event twice a year to encourage young entrepreneurs in the local community to get involved and enjoy the rewards of running their own business.



## Food & Beverage

### Make This Year's Christmas Gifts a Recipe for Success!



At the Good from Scratch Cookery School, we've been busy preparing an exciting calendar for the New Year! With a variety of hands-on cooking classes, evening supper clubs, events and farm shops there's something for everyone.

Whether you're treating family, friends, kids, or yourself, we offer classes and events to match every taste. Prefer

flexibility? We also have vouchers available for all our classes and events.

This year, do it a little differently, gift them an experience they'll never forget. Head on over to our website for more details, or give us a call on 094118808.

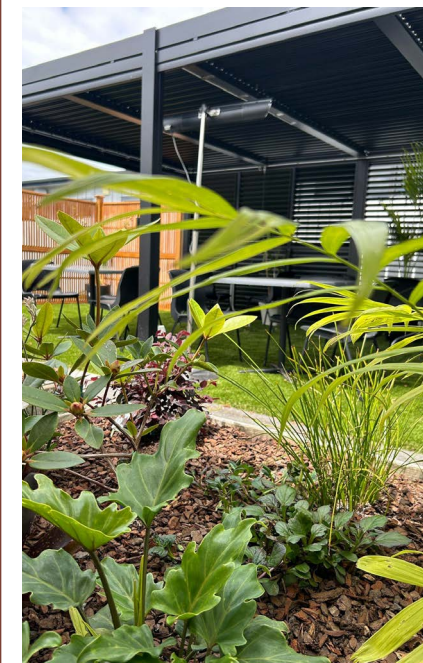
[www.goodfromscratch.co.nz](http://www.goodfromscratch.co.nz)

**GOOD! FROM Scratch**

Michael Van de Elzen's farm based cookery school. Hosting hands on cooking classes, private dinners and events.

376 Taiapa road, Muriwai, New Zealand  
[www.goodfromscratch.co.nz](http://www.goodfromscratch.co.nz)  
 09 411 8808  
[info@goodfromscratch.co.nz](mailto:info@goodfromscratch.co.nz)

### The Food Vault Cafe



#### New Outdoor Garden Seating Available

Starting from Labour Weekend, The Food Vault Cafe has introduced a lovely outdoor garden area at the back. This space features a pergola and open-air seating, surrounded by lush plants, creating a perfect spot for enjoying coffee, snacks, or lunch. Many customers, especially those with pets, have requested this addition for some time.

The Food Vault prepares all their meals in-house daily, ensuring guests receive the freshest food possible. Beginning November 1, 2024, they will also cater for small groups of up to 25 people.

For inquiries, please contact owner Afsana at 021 214 3242 or via email at [thefoodvaultcafe2023@gmail.com](mailto:thefoodvaultcafe2023@gmail.com).

**Henderson Reeves**  
 creating smart legal solutions

**Property • Disputes • Family • Wills**

Taina Henderson 027 537 9222  
 Shelley Funnell 027 537 9221  
 Amie Wallwork 021 421 336

[www.hendersonreeves.co.nz](http://www.hendersonreeves.co.nz)

**Friendly Legal Experts**

- Property Law
- Business Law
- Employment Law
- Debt Collection
- Family Law
- Family Trusts
- Estates
- Wills

**smith AND PARTNERS** LAWYERS

293 Lincoln Road  
 Henderson, Auckland  
 PH: 09 836 0939  
[smithpartners.co.nz](http://smithpartners.co.nz)

**FV**  
 the food vault

8/10 Matua Road, Huapai  
 09- 412 5085  
 Open 7 days  
 7am- 2pm



## Strawberries a sign of summer



A good strawberry crop is warming up in the sun. The tasty fruit is plentiful and expected to remain cheap with Phil Greig's Strawberry Gardens in Kumeu selling strawberries for around two punnets for \$8.

A better spring has contributed to a good strawberry supply this year, says Phil. He has three varieties – Camarosa, Monterey and Fronteras – all producing big, luscious red fruit. With the COVID years essentially behind, Phil says they also have more staff to help. Phil's shop is open seven days through summer, selling not only strawberries but real fruit ice-cream, frozen yoghurt, smoothies, Belgium waffles and coffee. Strawberries are particularly popular around Christmas, and 'pick-your own' is expected to kick in soon or later in the season.

Zaknick Farms (Zakberry) expects the strawberry season to continue through April next year. Its strawberries are selling quickly, including 'seconds', with prices reported around \$2 a punnet or \$10 for 3kg. Many roadside fruit and vegetable shops also sell strawberries in season, often home-grown.

George's Garden on Fred Taylor Drive, for instance, has been selling strawberries for years, not only there but at markets too.

The fruit is also available in supermarkets.

## Warm Spring Salad

### Ingredients

- 1 cup uncooked quinoa (or try speltberries)
- 1/2 tbsp extra virgin olive oil
- 1 leek, sliced into rounds or half moons
- 2 garlic cloves, minced
- 1 bunch asparagus, ends broken off and chopped into 1-inch pieces
- 1 cup diced strawberries (optional)
- 3/4 cup fresh or frozen peas
- 1 cup fresh parsley, roughly chopped
- 2-3 tbsp extra virgin olive oil, to taste
- 3 tbsp fresh lemon juice
- 1/2 tbsp pure maple syrup (or other sweetener)
- 1/4 tsp fine grain sea salt & lots of pepper, to taste
- lemon zest, for garnish (optional)

### Method

Rinse quinoa in a fine mesh strainer and place into a medium pot. Add 1.5 cups vegetable broth (or water) and bring to a low boil. Reduce heat to low-medium, cover with tight-fitting lid, and cook for 15-17 minutes, or until fluffy and all the water is absorbed. Fluff with fork, remove from heat, and let sit covered for 5 minutes.

Meanwhile, grab a very large skillet or wok. Sauté the leek and garlic in the oil for about 5 minutes over medium heat. Season generously with salt and pepper. Add in the asparagus and sauté for another 5-10 minutes or until the asparagus is just tender, but still a bit crisp. Stir in the strawberries (optional), peas, and parsley. Heat for a few minutes and then remove from heat.

Whisk together the dressing ingredients (olive oil, lemon juice, maple syrup, and 1/4 tsp fine grain sea salt) to taste. Pour dressing onto skillet mixture and stir in the cooked quinoa. Season to taste with salt and pepper & enjoy! This would also be lovely with nuts or seeds sprinkled on top.



*Come and check out our new*  
Delicatessen, Coffee, Juice & Ice Cream Bar

**BORIĆ Food Market**

1404 Coatesville - Riverhead Highway, Auckland

[www.boricfoodmarket.co.nz](http://www.boricfoodmarket.co.nz)



Everything you need to know about property

# Property Hub

West Auckland Property Management



# What's inside

19	Property News
24	Property Statistics
26	Hot Property
28	G.J. Gardner
30	Property Market
41	Home & Garden



## Property News

### West Auckland Property Management's new home in Hobsonville

West Auckland Property management and its combination of local knowledge, proven systems, and excellent results, has a new home at 2 Clark Road in Hobsonville. Graham McIntyre and Gail McIntyre are super excited about bringing this outstanding property management solution to the area, with a large client pool throughout the North West it was a natural fit to support the business and the future.

With 25 years of business experience Helen, Tracy and Trina will provide a seamless and integrated solution built on history and experience. "We combine local knowledge with a personal approach to property management to deliver a better experience for Owners and Tenants" says Graham McIntyre co-owner.

"We take the confusion out of staying compliant with the Residential Tenancy Act" says Helen Warriner, Senior Property Manager. "You can rely on us to keep your property in good shape and attract standout tenants, all while keeping you informed. It costs no more to put your rental property in safe hands that have safe guards and checks and balances in place".

"The reason that we wanted to buy the business", says Graham, "I love our people and the passion that they have for finding the balance between Owners and Tenants to get the very best result. The systems and the thinking in how they run the business, minimise vacancies and ensure the best value is delivered to Owners is truly exceptional. I have seldom seen a business that is so considered of all the pieces that makes up the whole".

"We're invested in protecting people's rights and a property's value" says Helen, "with decades of experience behind us, we know striking the right balance between landlords and tenants is absolutely crucial. That's why as property managers, we keep close relationships with both teams. With experienced and qualified property managers by your side, your investment property can earn income for years to come, while making dealing with tenants as seamless and stress free as possible".



"Look it's really simple, we want the very best tenants. Our aim is to reduce potential tenancy problems from occurring in the first place. To do this we go beyond what's expected. We go through a thorough process to ensure we have found the best tenants for your rental property with a proven formula. We talk with past landlords, referees, employers, contacts to do a thorough character reference and follow up with a full credit check. We then talk with the applicant about what we find and ensure they are of good character. We talk a lot" says Helen.

"We have an extensive history and experience in local investment property, ownership, management, and sales" says Graham, "we can provide you with specialist rental advice and services. We know the Residency Tenancy Act and will keep you informed of your rights and responsibilities. If you are thinking of selling your rental property, or buying more we can ensure you have the right assistance at all times. Whatever position you're in, we've got the experience and knowledge to help you succeed".

For more information, advice or a no obligation rental property appraisal call 09 832 0832 or go to [www.wapm.co.nz](http://www.wapm.co.nz) today.

Pictured Graham McIntyre and Helen Warriner

## Complete Property Management Solutions

Residential rental property advice that's timely, accurate, and measured, to ensure your income is maximized. It's a process that builds on 25 years of success and succession.

Ph 09 832 0832





# Property market report

On 14 August and 9 October, the Reserve Bank of New Zealand (RBNZ) cut the OCR (official cash rate) by 25 basis points (bps) to 5.25% and 4.75% respectively. Kiwi Bank Chief Economist Jarrod Kerr forecasts that the RBNZ will return to a neutral cash rate over the next two years, "We think they'll cut the OCR from 5.5% to 2.5%, and we expect a cut of 25bps at every RBNZ meeting from here, well into 2026." Interest rates are the largest driver of house prices. Falling interest rates will support the market and we expect steady gains in house prices from here." says Jarrod Kerr.

But what does this mean for the housing market?

- The New Zealand housing market is still struggling, reflected in the Real Estate Institute of New Zealand (REINZ) recording another fall in house prices in July. House prices have gone sideways over the last 12 months (+0.2% year on year).
- The RBNZ has finally started cutting the official cash rate, which will support the economy, boost confidence and help to stabilise the housing market.
- However, we still have a chronic shortage of housing in Aotearoa. We need to entice investors back so that developers will follow.
- When debt-to-income (DTI) restrictions came into effect on 1 July 2024 loan-to-value ratios (LVR) relaxed. They are complementary. DTI restrictions are unlikely to have a meaningful impact as they're introduced, although some borrowers may find it harder to get the loan size they need.
- When debt-to-income (DTI) restrictions came into effect on 1 July 2024, loan-to-value ratios (LVR) were relaxed.
- And as investors no longer need to worry about an extended Brightline test or interest deductibility, we should see investors return to the market.

The stockpile of homes for sale sitting on the property market got a little bigger in September, with both Trade Me Property and Realestate.co.nz seeing an increase in the number of homes available for sale on their respective websites.

Trade Me Property reported a 1% increase in total stock

for sale in September compared to August, and a whopping 23% increase compared to September last year. Realestate.co.nz's total stock was up 1.5% compared to August and up 27.4% compared to September last year. So there are plenty of homes on the market for potential buyers to choose from, and it seems, more arriving every day.

Vendors appear to be optimistic they will get a good price, with both websites reporting an increase in their average asking prices in September.

Trade Me Property's national average asking price in September was up 0.6% compared to August, while Realestate.co.nz's national average asking price was up a more substantial 4.9% for the month.

We do not know if those increases in average asking prices were due to vendors having more optimistic price expectations, or a slight shift in the mix of properties coming onto the market, or a combination of both.

But the big question hanging over the market now, is whether the increased optimism of vendors will be matched by an increase in enthusiasm from buyers.

We got an early indication on that front last week when Barfoot & Thompson, which is easily the largest real estate agency in the critical Auckland market, released its September sales figures.

These showed buyers were indeed more active in September, with the agency's sales at a four year high for the month, up 10.9% compared to August and up 19.5% compared to September last year.

However the extra commitment from buyers did not result in an increase in selling prices, which headed in the opposite direction.

Barfoot's average selling price declined for the third consecutive month in September and was down 2.4% compared to August. The median selling price also declined for the third consecutive month, and was down 1.9% compared to August. Those figures suggest market activity is picking up in spring, with more buyers and more sellers committing to a sale, but buyers remain cautious on price.

Refer to the prices achieved in the area property stats page.

If you are considering listing your property for sale it costs no more to use an experienced agent with a proven track record. A sensible commission structure and excellent advertising program offered to ensure satisfaction. Call me for a no obligation chat on 027 632 0421 or 0800 900 700, Graham McIntyre AREINZ. Country Living Realty Limited t/a Raine and Horne Kumeu - Hobsonville. Licensed REAA2008

## Rental market report

Good properties are achieving good tenancy applications and above average prices as the market continues to be over supplied in some housing stock and undersupplied in others. We expect this to be the normal rather the exception moving forward as tenants actively seek out rental property that offers garaging, storage, bathroom

flexibility and laundry convenience over homes that don't.

We summarise the market bonds on 2 bedroom homes this month to look at the trending:

Kumeu	2 Bedroom	\$ 553 - \$ 568pw
Helensville	2 Bedroom	\$ 590 - \$ 600pw
Hobsonville	2 Bedroom	\$ 600 - \$ 670pw
Massey	2 Bedroom	\$ 570 - \$ 620pw
Westgate	2 bedroom	\$ 610 - \$ 650pw
West Harbour	2 Bedroom	\$ 520 - \$ 650pw
Whenuapai	2 Bedroom	\$ 610 - \$ 650pw

If you have an investment property and are seeking a smart and sensible property management solution which is customised to your situation and requirements we would welcome the opportunity to chat. We offer a more sensible management fee and accountable asset protection schedule which will make you feel right at home. Call Graham McIntyre on 0276 320 421 or visit [www.wapm.co.nz](http://www.wapm.co.nz) for more information. West Auckland Property Management..

## Ascend financial services

The banking and lending industry is becoming more complicated with rules, regulations and layers of policy being added frequently. It is becoming increasingly



important to obtain quality advice on both how to obtain lending and how to structure it.

They key to this is having a good advisor on board. Going to the bank limits you to one option and remember bankers work for the bank. Advisors work for you. That carries a lot

of meaning and weight.

The difference in advice can cost or save you significantly. Advisors live and breathe the industry and know all the various ways to obtain a solution to your needs and there are often many paths to take.

Advisors are versatile, we can cover your whole lending environment using a range of lenders fit for purpose. Whether it be business, commercial, mortgage/asset finance, property development etc.

It's free to engage for a consult.

Ben Mune, 0212178208

[ben@ascendfinancial.co.nz](mailto:ben@ascendfinancial.co.nz)

- ✔ Property finance.
- ✔ Asset finance.
- ✔ Business finance.
- ✔ Personal finance.
- ✔ I cover all areas of lending.

**Ph 021 217 8208**  
[ben@ascendfinancial.co.nz](mailto:ben@ascendfinancial.co.nz)  
[www.ascendfinancial.co.nz](http://www.ascendfinancial.co.nz)

**Raine & Horne**

**Graham McIntyre**  
 Licensed Agent  
 Kumeu | Hobsonville

027 632 0421  
[graham.mcintyre@kumeu.rh.co.nz](mailto:graham.mcintyre@kumeu.rh.co.nz)

rh.co.nz  
 Raine & Horne New Zealand PTY Ltd Licensed REAA(2008)



# Getting a foot on the property ladder



By Tina White, ClearStone Legal

With property prices remaining high, we often see family and friends buying property together. There are benefits and risks - so what should you consider before taking the plunge?

The benefit of purchasing property with family or friends is that costs for conducting due diligence, loan applications,

conveyancing and ongoing maintenance is shared. Additionally, bank loans can be separated so each person (or couple) is responsible for repaying their "own" loan. Although, all parties will be jointly liable should one party default on their repayments.

If you are using KiwiSaver, you must live in the property for at least 6 months. If you are intending to live in the property together, you will want to be selective about who you live with. Think about what happens if they lose their job and can't contribute to the outgoings or how well you would work together to resolve any issues.

You can own the property jointly or as tenants in common in equal or unequal shares. The main difference is that if one owner passes away, their share of the home is automatically transferred to the remaining owners. Owning a property as tenants in common means your share of the property may be dealt with in accordance with your Will.

When buying property with friends and family, we strongly recommend a property sharing agreement (PSA). A PSA sets out each party's rights and obligations and is recommended for joint ownership. This covers things like who pays for what, in what shares and also states what happens in the event of a sale by some, or all of the owners.

Obtaining some advice at the outset can prevent potential issues. For free no-obligation advice, give us a call on 09-973-5102.

**CLEARSTONE LEGAL**

**Kumeu Office**  
1A Tapu Road, Kumeu

**Te Atatu Office**  
1/547 Te Atatu Road  
Te Atatu Peninsula

Call now to discuss your legal needs

p: 09 973 5102  
w: cslegal.co.nz

# Your Local Builder: GJ's Rodney West



GJ's Rodney West are excited to open the doors in their new location - 248 Main Road, Kumeu. GJ's has been operating in the Rodney area since 1997 and are proud to build great homes throughout the area. The local team is dedicated to helping you have a great building experience. Owned and operated by husband and wife team Rachael and Matt, the team looks forward to serving the community they love from their new location.

Matt and Rachael are very proud to have lived in the Rodney West district for over 25 years, with a long-term family association that stretches back over 100 years to Huapai's earliest settlers. Matt and Rachael believe the key factors in creating a home are:

Good communication, understanding and teamwork. They respect and understand your individual needs and unique requirements when building a home.

"We take immense pride in knowing that our dedicated team will build you a home that you will be extremely proud of." - Matt Lelean

By working with you, the team can design and build a home that suits you, your lifestyle, and your needs. Their experience and passion are a real asset for those building a new home.

Whether you're a first home buyer looking for a quality and affordable home, a family wanting a great home with room for everyone, or a larger lifestyle home that meets your family's unique needs, the Rodney West team looks forward to working with you to design a home you can be proud of.

Feel free to drop by their new offices at 248 Main Road, Kumeu to chat about your new home journey and discover for yourself why more New Zealanders trust G.J. Gardner to build their homes year after year than any other builder.

# Mortgages and Loans Ltd



Things you need to know before refinancing your mortgage:

With interest rates reducing and banks offering cash contributions to new customers many clients want to talk about a refinance. Your Mortgage Adviser who will have all the latest information when it comes to interest rates and what's currently happening in the market. Loan term is the length of your mortgage term appropriate for your financial situation, or would you benefit from extending or shortening the term? Repayment flexibility Does your current mortgage allow for extra repayments or other flexible repayment options that suit your financial goals?

Costs Associated with Switching Lenders. This one can catch you out if you haven't done your homework. It's important to consider the associated costs, which may include:

Break fees - Breaking a fixed-rate mortgage early, can result in early repayment fees (AKA break fees), or penalties which the Lender may charge.

Legal fees - When you refinance your mortgage there will most likely be legal fees involved. You'll need to work with a lawyer to handle the necessary documentation and registration.

**Loan Market**

**Stephen Massey**  
Mortgage Adviser  
stephen.massey@loanmarket.co.nz  
021 711 444  
Let's chat.

Repayment of incentives - If your original mortgage included incentives, such as a cash contribution, you may need to repay this if you refinance before the specified loyalty period ends

Working with a Mortgage Adviser to refinance your mortgage will open up the door to a wide range of loan products enabling you to secure the best terms for your needs. I can quickly do the calculations for you to make sure a refinance is the best thing to do.

Stephen Massey - Mortgage Advisor, Call 021 711 444, or check out my website [loanmarket.co.nz/stephen-massey](http://loanmarket.co.nz/stephen-massey)

# Land Law Limited



Land Law specialises in property law and conveyancing. They are Hobsonville based but cover the whole of New Zealand. Whether it is a sale, purchase, refinance or subdivision, Land Law can help. They have very competitive fees starting from \$899.00 plus GST and disbursements for a sale or purchase.

grant@landlawnz.com  
022-676-3002

**LAND LAW**  
CLIENT CENTERED CONVEYANCING

**CONVEYANCING - SALE or PURCHASE**  
FROM \$899 plus GST & disbursements  
Call now 022 676 3002  
[www.landlawnz.com](http://www.landlawnz.com)

# Your Partner In Property And Finance

Call Ben for personalised mortgage advice to help you achieve your property and financial goals!

- First Home Buyers
- Property Investors
- Upsizing & Downsizing
- Repayment Strategies

**Ben Konings**  
Your Local Mortgage Adviser

0204 1122 481  
ben@mortgagesupply.co.nz  
[www.mortgagesupply.co.nz](http://www.mortgagesupply.co.nz)

*Ben Konings gives financial advice through Fearless Financial Limited trading as The Mortgage Supply Co.*



# Area Property Stats

Every month Raine & Horne Kumeu assembles a comprehensive spreadsheet of all the recent sales in the area that reviews the full range of Residential and Lifestyle transactions that have occurred. To receive the full summary simply email the word "full statistics" to office@kumeu.rh.co.nz. This service is free from cost.

SUBURB	STREET	CV	BED	FLOOR AREA	LAND AREA	SALE PRICE
Bethells	Bethells Road	\$720,000	0	0	815m2	\$800,000
Coatesville	Robinson Road	\$2,125,000	4	243m2	21000m2	\$2,300,000
	Robinson Road	n/a	0	0	20300m2	\$2,450,000
	Wake Road	\$2,275,000	4	264m2	21100m2	\$2,275,000
Herald Island	Ferry Parade	\$1,045,000	2	91m2	812m2	\$1,045,000
Helensville	Lewann Lane	\$970,000	3	176m2	621m2	\$940,000
	Railway Street	\$720,000	3	92m2	455m2	\$638,000
	Rauta Way	\$960,000	4	160m2	749m2	\$935,000
	St James Ave	\$870,000	3	111m2	844m2	\$970,000
	Te Kauri Place	\$920,000	3	146m2	907m2	\$869,000
	Urumaraki Ave	\$980,000	3	168m2	500m2	\$980,000
Hobsonville	Autumn Blaze Street	\$1,075,000	3	132m2	0	\$1,056,000
	Bomb Point Drive	\$1,650,000	4	229m2	261m2	\$1,410,000
	Bomb Point Drive	\$1,445,000	5	216m2	302m2	\$1,340,000
	Bristol Freighter Road	\$640,000	3	100m2	0	\$1,200,000
	Buckley Avenue	\$1,125,000	3	147m2	175m2	\$1,080,000
	Buckley Avenue	\$1,525,000	4	203m2	335m2	\$1,390,000
	Clark Road	\$1,225,000	3	138m2	335m2	\$1,230,000
	Clark Road	\$1,175,000	4	177m2	188m2	\$1,100,000
	Clark Road	\$1,175,000	4	177m2	188m2	\$1,100,000
	Clark Road	\$860,000	2	73m2	148m2	\$815,000
	Clark Road	\$1,260,000	4	182m2	162m2	\$1,180,000
	Clark road	\$1,175,000	4	177m2	188m2	\$1,100,000
	Hiki Street	\$965,000	3	115m2	131m2	\$940,000
	Hiki Street	\$905,000	3	102m2	109m2	\$850,000
	Hobsonville Point Road	\$574,000	1	57m2	0	\$574,000
	Hobsonville Point Road	\$715,000	1	66m2	0	\$560,000
	Hudson Bay Road	\$950,000	4	171m2	0	\$1,100,000
	Joshua Carder Drive	\$1,570,000	5	226m2	301m2	\$1,540,000
	Kearns Drive	\$1,445,000	4	205m2	294m2	\$1,331,000
	Lester Street	\$1,525,000	4	206m2	275m2	\$1,350,000
	Mapou Road	\$765,000	2	72m2	0	\$655,000
	Memorial Park Lane	\$945,000	3	145m2	105m2	\$910,000
	Onekiritea Road	\$905,000	2	81m2	0	\$790,000
	Pihihoi Place	\$1,310,000	5	210m2	297m2	\$1,387,500
	Pukeko Road	\$1,380,000	5	232m2	207m2	\$1,330,000
	Rangihina Road	\$630,000	1	66m2	0	\$635,000
	Ringa Matau Road	\$885,000	2	88m2	97m2	\$767,500
	Roa Avenue	\$1,430,000	5	207m2	282m2	\$1,300,000
	Station Street	\$1,010,000	2	95m2	0	\$890,000
	Thomas Rielly Avenue	\$1,775,000	5	301m2	379m2	\$1,750,000
	Treloar Crescent	\$780,000	3	100m2	0	\$775,000
	Tuatua Road	\$1,210,000	3	176m2	212m2	\$1,212,000
	Waka Moana Drive	\$1,100,000	3	128m2	182m2	\$1,080,000
	Wallace Road	\$510,000	3	112m2	0	\$955,000
	Waterlily Street	\$640,000	3	100m2	0	\$1,180,000
Huapai	Gilbransen Road	\$1,500,000	4	218m2	779m2	\$1,450,000
	Lumbarda Drive	\$700,000	2	75m2	80m2	\$680,000
	Parlane Drive	\$2,125,000	5	308m2	1574m2	\$1,850,000
	Paihere Street	\$680,000	4	454m2	0	\$1,140,000
	Ropere Street	\$1,225,000	4	193m2	361m2	\$1,150,000
	Sir Lincoln Drive	\$1,475,000	4	224m2	664m2	\$1,458,000
	Vinistra Road	\$1,230,000	4	178m2	401m2	\$1,188,000
	Vogwill Road	\$1,300,000	3	182m2	658m2	\$1,470,000
	Walter Ruddock Ave	\$1,600,000	4	240m2	686m2	\$1,435,000
Kumeu	Koraha Road	\$2,675,000	5	284m2	5616m2	\$2,550,000
	Sauterne Road	\$930,000	3	100m2	200m2	\$880,000
Massey	Amber Ridge Avenue	\$1,050,000	3	162m2	216m2	\$895,000
	Cartmel Avenue	\$1,700,000	4	156m2	1176m2	\$1,190,000
	Claverdon Drive	\$1,150,000	3	100m2	620m2	\$845,000
	Colwill Road	\$1,250,000	3	90m2	678m2	\$900,000

SUBURB	STREET	CV	BED	FLOOR AREA	LAND AREA	SALE PRICE
	Don Buck Road	\$1,375,000	5	290m2	913m2	\$1,110,000
	Glenbervie Crescent	\$1,050,000	3	94m2	627m2	\$875,000
	Horokaka Street	\$900,000	3	99m2	0	\$860,000
	Lawson Creek street	\$780,000	5	190m2	423m2	\$1,505,000
	Malmö Place	\$960,000	3	93m2	991m2	\$885,000
	Paina Crescent	\$420,000	3	116m2	0	\$848,000
	Puwaha Street	\$920,000	3	102m2	187m2	\$858,800
	Royal Road	\$860,000	3	90m2	0	\$755,000
	Woodside Road	\$720,000	2	75m2	421m2	\$675,000
Muriwai	Domain Cres	\$1,200,000	2	100m2	885m2	\$1,035,000
	Edwin Mitchelson Road	\$1,125,000	4	96m2	0	\$1,367,000
Parakai	Aitkenhead Court	\$910,000	3	164m2	481m2	\$827,000
	Ara Kakara Avenue	\$1,250,000	3	163m2	521m2	\$1,180,000
	Malbec Place	\$760,000	3	100m2	773m2	\$699,000
	Rere Place	\$700,000	3	98m2	498m2	\$650,000
	Springs Road	\$765,000	4	95m2	506m2	\$700,000
Riverhead	Alexandra Street	\$1,080,000	5	319m2	639m2	\$1,888,000
	Barrett Road	\$1,350,000	4	158m2	10000m2	\$1,490,000
	Crabb Fields Lane	\$1,550,000	4	211m2	1179m2	\$1,856,000
	Crabb Fields Lane	\$1,450,000	4	250m2	0	\$1,620,000
	Gumdiggers Lane	\$1,405,000	5	158m2	1132m2	\$1,235,000
	Lloyd Road	\$3,200,000	5	265m2	15000m2	\$2,550,000
Swanson	Awhiorangi Promenade	\$1,025,000	4	180m2	1088m2	\$1,065,000
	Candia Road	\$960,000	4	184m2	450m2	\$845,000
	Kiokio Place	\$1,550,000	6	342m2	600m2	\$1,668,000
	Swanson Road	\$980,000	4	180m2	387m2	\$1,065,000
Taupaki	Houkura Place	\$1,125,000	4	200m2	11100m2	\$1,295,000
Waimauku	Hinau Road	\$1,125,000	4	193m2	1902m2	\$1,164,132
	Gavinike Place	\$1,300,000	3	158m2	1501m2	\$1,400,000
	Waikoukou Valley Road	\$910,000	3	103m2	1328m2	\$950,000
	Waikoukou Valley Road	\$1,275,000	4	199m2	15100m2	\$1,225,000
	Waimauku Station Road	\$1,125,000	4	126m2	4474m2	\$970,000
Waitakere	Wairere Road	\$950,000	3	120m2	1351m2	\$850,000
West Harbour	Bass Street	\$1,075,000	3	150m2	0	\$1,065,000
	Bluefin Way	\$1,915,000	5	320m2	750m2	\$1,741,000
	Crosby Road	\$880,000	3	100m2	0	\$710,000
	Hobsonville Road	\$1,105,000	3	182m2	379m2	\$1,050,000
	Luckens Road	\$1,425,000	5	285m2	370m2	\$1,228,000
Whenuapai	Harewood Street	\$1,040,000	3	148m2	222m2	\$975,800
	Kopuru Road	\$1,110,000	4	179m2	198m2	\$1,135,000
	Punga Road	\$2,705,000	5	395m2	8106m2	\$2,800,000
	Waimarie Road	\$1,650,000	4	214m2	675m2	\$1,575,000

DISCLAIMER: These sales figures have been provided by a third party and although all care is taken to ensure the information is accurate some figures could have been mis-interpreted on compilation. Furthermore these figures are recent sales over the past 30 days from all agents in the area.

Raine & Horne's commission rate:

**2.95%** upto \$490,000

(Not 4% that others may charge)

**1.95%** on the balance

Plus \$490 admin fee.  
All fees and commissions + GST

Raine & Horne Kumeu also provide statistical data FREE from cost to purchasers and sellers wanting more information to make an informed decision. Phone me today for a FREE summary of a property and surrounding sales, at no cost and no questions asked. Graham McIntyre 027 632 0421 \*Available for a limited time. Conditions apply.

**Raine & Horne**®

This page is sponsored by Raine & Horne Kumeu - Hobsonville  
Phone 0800 900 700 Country Living Realty Ltd Licensed REAA (2008)

Graham McIntyre  
Brand & Territory Owner  
027 632 0421







## Inner Harbour Views, Sunny and alfresco

318 square metre (approx.) home on 1012 square metres (approx.) of land in a cul-de-sac Whenuapai Village inner harbour location, with boat ramp, park, reserve, shops and School close by.

This home has been renovated to a premium standard with the vision of ease of living, offering fabulous, family friendly living/ entertaining areas.

Set within an established treescape, with large decking, all weather pergolas and wide double sliders to seamlessly flow outside to inside.

If you have a mixed family, blended family or enjoy the freedom of big-home space within quiet surrounding, look no further.

The CV on this property is \$1,740,000. We are happy to supply a list of the last 12 months of transactions in this area. For a complete transaction list please email [graham.mcintyre@kumeu.rh.co.nz](mailto:graham.mcintyre@kumeu.rh.co.nz)

For more information on this property call Graham McIntyre on 027 632 0421 or [graham.mcintyre@kumeu.rh.co.nz](mailto:graham.mcintyre@kumeu.rh.co.nz). Country Living Realty Limited T/A Raine and Horne Kumeu - Hobsonville. Licensed REAA (2008).



# NOW'S A GREAT TIME TO BUILD



## We can make your new home unique to you!

Now's a great time to build, so make sure you're putting yourself in the safest hands by choosing the right builder with a proven track record.

GJ's has built almost 23,000 homes throughout NZ for over 25 years, with every home completed. It's just one of the reasons they are New Zealand's Most Trusted Home Builder year after year.

So whatever you're looking for, bring us your ideas and we'll work with you to create a home that fits you and your lifestyle.

So make the wise choice and call your local GJ's team today.



Scan here to see your local team and start your new home journey today

**G.J. Gardner.** **HOMES**





2/10 Javelin Place, West Harbour

4 Bed 2 Bath 2 Car

## Motivated Vendor, sunny, spacious, home

Welcome to a beautifully presented mixed/weather board/ brick home, a short stroll from Marina View School, parks and convenience shopping. In a quiet, mature, Tahitian Pohutukawa lined cul-de-sac street surrounded by substantial homes you'll feel inspired by colour and bird life.

From integrated alfresco living to glorious views to the city over the inner harbour, certainly nothing better on a sunny day. Enjoy the warmth and serenity of this modern layout, with multiple entertaining zones with kitchen to dining and lounge to alfresco dining with full luvatech and weather screens. Offering four bedrooms, including master ensuite and walk in wardrobe. Three toilets including bathroom, guest toilet and ensuite. Abundant sunshine and heat pump compliments this warm home, perfect for winter snuggling in. A private courtyard and back yard compliments the offer. Come and experience this fabulous home today, a short drive away from shopping, schools, parks, inner harbour and motorway access.

Guide  
Negotiation



3 Bluefin Way, West Harbour

4 Bed 2 Bath 2 Car

## Sun filled, 2 level - Marina View School

A fabulously crafted and meticulously cared plaster on cladding board set in a cul de sac road, with established plantings, clever gardens and enjoying all day sunshine.

An open plan kitchen, dining with alfresco to patio and outdoor entertaining area. Significant storage, large garaging and guest w/c.

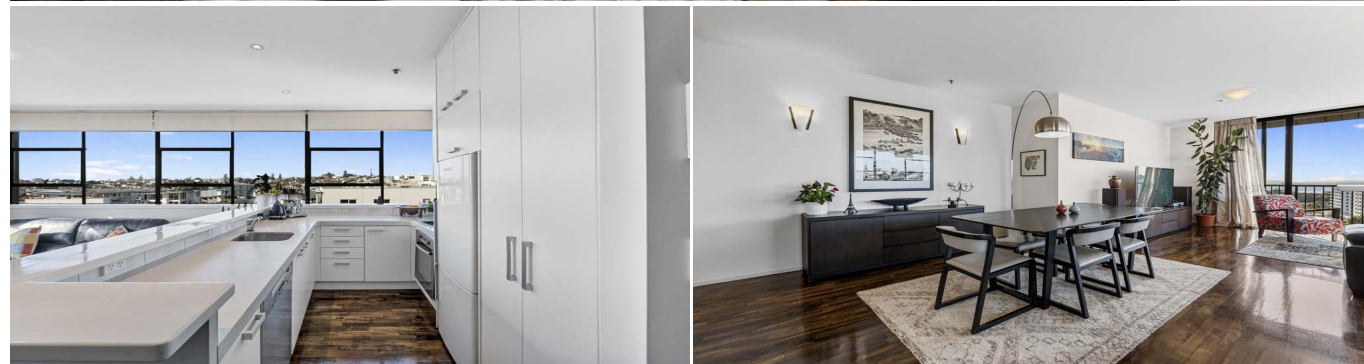
Upstairs enjoy three bedrooms, plus large lounge/media, or additional bedroom and two bathrooms with excellent connectivity, a peek of the inner harbour and alfresco champagne decking.

There is so much to love within this modern family home. Owners are heading South so don't delay.

Guide  
Negotiation







5A/ 15 Augustus Terrace, Parnell

3 Bed 2 Bath 3 Car

## View Today, 3 Bed, 3 Car Parks, Harbour Views

The convenience of Parnell Penthouse living, the ease of three secure car parks, mixed with an inspiring view down the Harbour out of extensive sliders.

The very best of open plan living with three bedrooms and two bathrooms on offer.

From the master, a delightful (as Manhattan) city skyline sparkles at night and gives way to impressive perspective through the day.

A convenient storage lock-up ensures flexibility and ease of use. As an investor or homely occupier looking for a very special Parnell apartment this must be on the top of your list.

Offering a very sensible purchase within a very smart building.

Body corporate investment \$16,000pa

**Guide**  
Negotiation



6 Wharara Lane, Massey

2 Bed 1 Bath 1 Car

## Views to City, affordable duplex with carpark

This near new GJ Gardner build with Master Build Warranty provides an excellent opportunity to jump on the property ladder with lock-up and leave options, public transport at the gate and convenience shopping a short stroll away.

A beautifully presented two bedroom home with bathroom and guest toilet, alfresco to patio and small grassed lawn.

An outstanding option for a discerning buyer looking for pedigree and performance.

Earthy colours and upgrades, this home is one that will be on top of your watch list. Don't dilly-dally, great homes like this don't last.

**Guide**  
By Negotiation







24/ 18 Williams Road, Hobsonville

2 Bed 1 Bath 1 Car

## Sun filled Brick & Tile, over 55's Sanctuary

This boutique and well appointed over 55's village provides an excellent environment, community and sun filled quiet home, out of the hustle and bustle but close enough to walk to convenience shopping, parks and bus stop. The land is flat but elevated, out of flow paths and out of flood plains. Built to last, this brick and tile two bedroom home with single garage has been refurbished and is presented to a very high standard, with new kitchen and new carpet. Generous space inside and out side that will allow you the canvas to create your home and garden, just the way you like it. The home has been invested in, with attic stairs to access ceiling storage area, a moisture reduction system and heat pump, all designed to make the living environment the best possible. The neighbors are engaging, fun and the community is inclusive which allows you to have time for yourself or shared with activity and events. A great time to view, a fabulous option to invest in.

Guide  
Negotiation



18 Peters Lane, Taupaki

## Sun kissed, north facing house and land package

A large north facing canvas, with natural water course and established plantings with options to select the best house and land package for you, including home and income options. Elevated rolling land with views to Kumeu and beyond, the houses selected are designed to make the most of the aspect and the outlook. This land is historical and original clay base which has no historical slip effects nor movement lines. In addition much of the area is slowly moving to countryside living which allows for great intensification within this residential lifestyle community. Please survey the house and land package options outlined and book a walk-the-land meeting with leading Taupaki agent and local resident Graham McIntyre. Renders and pricing for House and Land Packages provided by: GJ Gardner indicative value \$3,479,000 approx. enquire for further information Golden Homes indicative value \$3,798,000 approx. enquire for further information Signature Homes indicative value \$3,326,500 approx. enquire for further information

Guide  
Negotiation







22 Zingaro Place, Massey

3 Bed 1 Bath 2 Car

## 2 Car Garaging, Big Workshop, Sunny, Elevated

Set on 979sqm (approx) this is a big section with a big home.

Offering extensive garaging and off street parking with storage options galore, work from home, or develop an additional guest wing.

Upstairs enjoys extensive gated lawn and gardens with mixed alfresco settings to enjoy sunshine or shade with easy access to kitchen, dining and lounge areas.

All the bedrooms and bathroom off a central hall, this is a home that will deliver peace and ambience upstairs and hobby, work and workshop downstairs, certainly a ying and a yang for all buyers.

The CV on this property is \$975,000. We are happy to supply a list of the last 12 months of transactions in this area. For a complete transaction list please email

**Guide**  
By Negotiation



26 Squadron Drive, Hobsonville

2 Bed 2 Bath 1 Car

## Garage, Park, Grass, Views Ooo La La - Hobsonville

A contemporary, sun filled and private 2 bedroom, 2 bathroom home over 2 levels offering an impressive list of extras, situated off a quiet lane way minutes away from Hobsonville shopping precinct.

A two level end duplex built by Universal homes, this is a lock up and leave that has been invested in with smart air circulation, drapes and finishing's.

Downstairs enjoys an open plan alfresco living environment with patio and grassed area.

Upstairs are two bedrooms (generous size), bathroom and ensuite.

Come view Mary's Gallery a mix of beautiful artwork and collectables within an easy living environment with garage and parking outside off the private laneway access.

**Guide**  
Negotiation







29 Sunny Crescent, Huapai

4 Bed 2 Bath 2 Car

## Hinuera stone on 1/2 acre - Beautiful setting

Seldom found this is an outstanding mini-lifestylar in an urban setting, offering the best of urban and lifestyle living. Offering the good life in so many ways, the home has been meticulously crafted to deliver functionality and beautiful form. Clad in Hinuera split face, kiln fired stone, it offers a special exclusive style that merges seamlessly decking and patio entertaining. Extensive sliders deliver the outside in, enjoying open plan lounge-dining and kitchen-cozy meeting the dynamic needs of family living. Hardwood flooring that takes your breath away. All bedrooms, bathroom and laundry off a central corridor. Master, ensuite and walk in wardrobe also enjoys slider access to north facing decking. Smart and sustainable services with solar hot water, wet back, ventilation and heat transfer systems, uncompromised insulation, and significant loft storage space which could see further development. Over 500 square meters of raised bed gardens, fruiting trees, delivers an orchard and market garden at your doorstep. A short stroll to shops, schools, park and transport links. So if you're a family looking for the good life - you've just found it.

**Guide**  
Negotiation



421 Kiwitahi Road, Helensville

## 1.58 hectares (approx) bare land

We are viewing most properties on a daily basis and are excited to get you through this home. Text me a time/day that suits you to view on 027 632 0421.

**Guide**  
Negotiation

Discover a rare opportunity on this expansive 15,860 sqm (approx.) piece of land, offering a diverse range of contours, from flat expanses to gentle slopes.

With a North West facing orientation, this plot provides the canvas for crafting your own personal paradise. Embrace breath taking views and explore various landscaping possibilities within this distinctive microclimate. Tucked away from the road, on a tar sealed access way, convenience meets serenity, with services within easy reach.

Unlock the potential for a harmonious lifestyle by exploring house and land package opportunities tailored to your vision for a dream home in this idyllic setting.





# LADIES' NIGHT

Get the Girls together for a fabulous night out at  
Mitre 10 MEGA Westgate

MITRE 10  
MEGA

WESTGATE



Wednesday 20th November 2024  
7:00 to 9:30pm  
Mitre 10 MEGA Westgate  
Northside Drive Whenuapai

Get the chance to pick up expert tips from  
our huge range of suppliers,  
plus gain some hands on experience  
building your own planter box

BUILD YOUR OWN  
PLANTER BOX



\*15% STOREWIDE  
DISCOUNT

COMPLIMENTARY  
REFRESHMENTS & NIBBLES

\*15% Storewide Discount does not apply to  
trade/credit accounts, NZDF accounts/cards.  
Special orders and Mitre 10 staff are also  
exempt and NO Rainchecks.

Register in-store or online at  
[www.mitre10.co.nz/mega-westgate](http://www.mitre10.co.nz/mega-westgate)  
Fabulous prizes to won!

**\$10 ENTRY**  
PER PERSON  
Proceeds go to  
Back 2 School Project



## Home & Garden

### Let's clear the air: Talking septic tanks



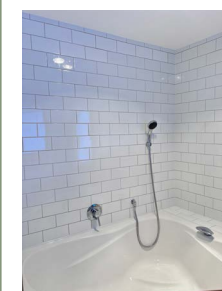
If you don't want a "stink" Christmas season this year, consider getting your septic tank emptied soon, before the holiday rush. The last thing you want spoiling your Christmas celebrations and summer fun is unappealing wafting scent or an overflowing tank - no thanks.

Most tanks require servicing every 3 to 5 years, depending on the size of the tank and household usage ie how many of you live there. During a HydroVac septic tank empty, our professionals pump out the tank and transport the waste offsite for safe disposal.

This is a not a job you can DIY. Hiring a professional septic tank emptying service ensures the job is done safely and thoroughly. Our team uses specialised equipment to pump the contents out of the tank, followed by a proper disposal process that meets environmental standards.

For a limited time HydroVac is running a SPRING SEPTIC TANK EMPTY SPECIAL - just \$685+GST in for residential tanks up to 5000L in selected West and North Auckland areas, plus a bonus FREE Bio-Zyme InCistern treatment. See our ad in this issue or check out our website for all the details: [www.hydrovac.co.nz](http://www.hydrovac.co.nz)

### Need a tiler - Tile Wright



Now's the time to start thinking about that kitchen, bathroom, laundry project before Christmas and the New Year.

We are now carrying out free no-obligation quotes for your tiling needs; kitchens, splash backs, bathrooms, under floor heating and laundries.



PROUD TO SERVE OUR  
LOCAL COMMUNITY WITH  
SEPTIC TANK EMPTIES  
AND MAINTENANCE.

0800 493 768  
[www.hydrovac.co.nz](http://www.hydrovac.co.nz)



## Tile Wright®

- Bathrooms
- Kitchens
- Splash Backs
- Waterproofing

**Josh Wright**  
027 260 8225  
[Tilewright@outlook.com](mailto:Tilewright@outlook.com)



SCAN TO REGISTER



We specialise in all things tiling; providing high quality services including Auckland Council approved water proofing, bathrooms, kitchens and splash backs.

Tile Wright has over 7 years' experience in the industry, we pride ourselves on high quality workmanship.

We cover most of Auckland and Northland, have affordable prices and offer a workmanship warranty on all work completed. No job too small, we cover it all.

Call Josh today on 027 260 8225 or email [tilewright@outlook.com](mailto:tilewright@outlook.com) for a free no-obligation quote.

## Get ready for Christmas with fast, reliable plumbing services

The countdown to Christmas has begun. Now is the perfect time to tackle those plumbing jobs you may have put off during the colder months, before the holiday rush sets in.

At Laser Plumbing Whenuapai, we understand how important it is to resolve plumbing issues quickly. With our skilled team of experienced maintenance plumbers, we're ready to provide fast, efficient, and professional service, ensuring all your plumbing needs are handled promptly and with care.

Don't wait - let us help you get your home ready for the holiday season.

How can we assist?

- All plumbing maintenance issues leaking taps and toilets
- Leak detection and repair
- Hot water system installation and servicing

**Ph: 09-417-0110**  
[whenuapai@laserplumbing.co.nz](mailto:whenuapai@laserplumbing.co.nz)

**ROOFING PLUMBING DRAINAGE**

Proudly providing reliable, affordable plumbing, roofing and drainage services to our community for over 20 years!





**WINNER**  
2024



**FINALIST**  
2024



**FINALIST**  
2024



**FINALIST**  
2024



Drain cleaning and blockage removal

- Roof and gutter maintenance
- Watermain maintenance and repair
- Gas fitting
- Backflow prevention testing

Our plumbers take pride in their quality of work and are committed to delivering exceptional service every time.

**Ready to get your plumbing sorted?**

Reach out to us today and let our team take care of it. Contact us on [whenuapai@laserplumbing.co.nz](mailto:whenuapai@laserplumbing.co.nz) or call 09-417-0110

## Blackout Electric

Blackout Electric is a local family owned and operated business, run by Sebastian Weaver, a registered Electrician with over 17 years' experience in the industry.

After completing his apprenticeship and spending a number of years working for electrical companies, learning the ins and outs of the industry, Seb decided it was time to go out on his own and build his own business



from the ground up - since then, he hasn't looked back. Nearly 3 years on we have 4 staff and two of our staff are out of Kaipara College, which Blackout supports via their Gateway Programme.

Seb is incredibly passionate about passing on his knowledge to others who want to be in the trade, and really enjoys seeing them succeed and become successful electricians themselves. Since starting Blackout Electric, the support and loyalty we have experienced from locals is second to none. Customers who not only continue to use our service, but refer and recommend us to their own family and friends. This is a testament to the service we provide, and the reason we continue to grow as a business. Seb is highly experienced in delivering cost-effective, high quality workmanship - offering solutions, not problems. At Blackout Electric, we pride ourselves on exceeding client's expectations. We build a relationship with our customers that begins on the first day of contact, and only ends once they're fully satisfied with our work.

We specialise in all forms of residential and commercial electrical work. Including new builds and renovations, alarm systems, CCTV and AV, and general maintenance - From something as simple as a new power point, to an entire house rewire, Blackout Electric is happy to help. Contact Blackout Electric for all your electrical service needs.

We can be found at [www.blackoutelectric.co.nz](http://www.blackoutelectric.co.nz) or [info@blackoutelectric.co.nz](mailto:info@blackoutelectric.co.nz).





**wallerprojects**

**MARK WALLER**  
M: 021 802 845  
E: [mark@wallerprojects.co.nz](mailto:mark@wallerprojects.co.nz)  
A: The Hangar, Catalina Bay,  
2/2 Boundary Road, Hobsonville Point  
W: [wallerprojects.co.nz](http://wallerprojects.co.nz)

**AWARD WINNING DESIGN & BUILD**



## Whenuapai Floral & Garden Circle Oct 2024



The Meeting was led by Margaret B in the absence of Margaret T and reinforces our need for a vice President to step in when needed. Margaret told us a little about her four weeks in England with her daughter and some of the places they visited. One of the highlights was sharing lunch in a restaurant in an unlikely place, "inside" a women's prison, aptly named "The Clink". It was run by inmates learning the hospitality trade prior to their release.

Sandra Cross, a former florist, who nowadays only helps out at peak times like Valentine's Day and Mother's Day, demonstrated the art of floral arrangement which still uses the "three or five of the same" rule for maximum effect. Before our watching gaze, she made four different beautiful displays. First a small yellow floral delight followed the leafy base inside a ceramic dish, next a lovely lavender basket of blooms with ribbon and bead decorations around the handle. A Christmas red and green combination with gold baubles followed, with, lastly, a natural collection built into oasis carefully positioned inside a nikau frond.

If you would like to know more about our Club, and wish to join us, please phone Judy Garrity on 8335592. Meetings are held at 1 p.m. at 41 Waimarie Road, Whenuapai Village, on the second Thursday of the month with trips usually on the fourth Thursday. Entry fee is \$4 with another dollar per raffle ticket.

Until next time, Happy Gardening from Mary Anne Clark

## Sunflowers in Taupaki

Chris Flaunty and his Cedel Downs team are preparing to plant sunflowers again at Cedel Downs farm in Red Hills Road, Taupaki, after a successful first event early this year.

He expects the farm will reopen for sunflower experiences

**Premium Landscaping & Maintenance**





**FREE QUOTES & ADVICE ON ALL OUR SERVICES**

**BALCONY & POT GARDENS**

*Need privacy? We have the solution.*

**CALL 027 579 0001**

[Email:greg@gkcreations.co.nz](mailto:Email:greg@gkcreations.co.nz)  
[www.gkcreations.co.nz](http://www.gkcreations.co.nz)







# Kumeu Community Garden update



and visits for four weekends from about Saturday January 11, 2025.

People swarmed to the farm's two hectare "Cedel Downs Sunflower Patch" in January this year, many also taking up the offer of VIP "Sunset Sessions".

Visitors were encouraged to take photos, bring a picnic and enjoy some family time among the flowers.

Sunflowers can be cut and taken home and seed packets are available for sale too.

Tickets will be available on Eventfinda Auckland from December 15, 2024. Visit [www.cedel Downs.co.nz](http://www.cedel Downs.co.nz) for more information.

As the gardening season blossoms, our community garden is thriving with a colourful array of plants and exciting upcoming events. Here's a snapshot of what's growing and what's to come.

Our garden is currently bursting with a variety of fresh produce growing and ready to eat. We're growing a delightful mix of brown and red onions, along with spring onions that add a punch to any dish. While we've seen

a few challenges - slugs and snails have taken a liking to our broccoli - we're not deterred. The garden is also home to bok choy and 'drunken woman' lettuce.

As we dig deeper into the soil, we're excited about our potatoes just planted, and a coming selection of herbs, including coriander, basil, fennel, and thyme - perfect for whipping up summer pesto. Our radish seeds have been sown, and we're keeping our fingers crossed for a good yield. We've also planted carrots, although they're taking their time to make an appearance. While the silverbeet and spinach may be going to seed, they're still providing some lovely green leaves. Be sure to grab these before they disappear.

Looking ahead, preparations are underway for tomatoes and sunflowers, which promise to add a splash of colour to our garden. Meanwhile, our asparagus is sprouting beautifully, offering fresh, crisp spears ready for the table.

We're thrilled to see new volunteers joining us in our gardening efforts. There's always room for more hands, so whether you're an experienced gardener or a curious newcomer, come down and get involved.

We're excited to host a visit from Matua Ngaru School, where we'll share our gardening experiences with the students. Additionally, we'll be giving a talk to the Kumeu Garden Club, fostering community engagement and sharing our passion for gardening.

As we continue to cultivate our garden, we're grateful for the support of our community. Let's keep growing together.

# Waimaku Garden Club



We had an interesting visit to the Fo Guang Shan Buddhist Temple complex at East Tamaki, with its serenely landscaped gardens and awesome vegetarian cafe,

## WYATT LANDSCAPE SUPPLIES

0800 METAL4U - WWW.WYATTS.NZ

# WE ARE YOUR LOCAL!

TOPSOILS	GARDEN MIX	ORGANIC COMPOST	BARK & MULCH	PEBBLES
SCORIA	SAND	METAL & LIME	SLEEPERS	ROCKS & PAVERS

### 948 STATE HIGHWAY 16, WAIMAKU OPEN 7 DAYS

**Signature HOMES** Est. 1983  
YOUR HOME. YOUR WAY.

## Visit our Huapai Showhome

**Searching for new home inspiration?** Why not visit Signature Homes latest Huapai Showhome to experience the difference.

190 Matua Road, Huapai  
Open Daily, 12pm - 4pm

199m<sup>2</sup>
3
2
2
2

80 Main Road, Kumeu | [signature.co.nz](http://signature.co.nz) | 0800 020 600



where we enjoyed a nutritious lunch. They also have a wonderful art gallery. It is the largest Buddhist temple in New Zealand and was designed in the architectural style of the Tang Dynasty. They gave us an informative tour. Following there we went to the Auckland Domain to visit the newly opened Winter Gardens whose historic, old heritage glasshouse buildings have been restored over the last few years. It was a great visit to an Auckland favorite housing a myriad of rare plant species and botanical displays a visual delight. We finished off our day by enjoying ice cream while overlooking the lovely pond in the afternoon sunshine before our bus trip home.

Jo Little

## Hardfell Ltd

How to select the right arborist for your tree care needs.

Choosing a professional arborist is crucial for maintaining the health, safety, and beauty of your trees. Whether you're dealing with a hazardous tree, routine pruning, or planting new ones, hiring a qualified arborist ensures expert care and peace of mind.

1. Verify Qualifications and Experience - Confirm that the arborist is properly trained and qualified. Qualified arborists have the technical knowledge and hands-on experience to care for trees according to the best industry standards.

2. Check Insurances - Tree work can be hazardous, especially when dealing with large or damaged trees. Ensure the arborist you hire has adequate insurance coverage. This protects you from being held responsible



in the event of an accident or damage to your property.

3. Request References and Reviews - A reputable arborist should have a proven track record. Ask for references or check online reviews to gauge the quality of their past work. Positive feedback from previous clients is a good indicator of reliability and professionalism.

4. Obtain Multiple Quotes -Don't settle on the first arborist you find. Obtain multiple estimates for the work you need done, and compare both the cost and the services offered. Keep in mind that the cheapest option may not always be the best. Look for transparency in pricing and scope of work.

5. Ensure Safety and Professionalism - Tree work is dangerous, and safety should always be a top priority. The arborist should use appropriate safety equipment and follow established safety protocols. They should also demonstrate professionalism in communication and respect for your property. By considering these factors, you can ensure your trees receive the expert care they deserve while protecting your property and your investment.

shaun@hardfell.co.nz 021-0720-739

**HARDFELL**  
PROFESSIONAL ARBORISTS

# TREE MAINTENANCE

**WE OFFER**  
TREE PRUNING - TREE REMOVALS  
HEDGE TRIMMING - STUMP GRINDING

**ABOUT OUR COMPANY**  
PROFESSIONAL SERVICE - QUALIFIED ARBORISTS  
FREE QUOTES - FULLY INSURED  
FAMILY OWNED BUSINESS

**HARDFELL.CO.NZ - 021 072 0739 - SHAUN@HARDFELL.CO.NZ**

**DAN TAYLOR**  
PLUMBING & GAS

FOR ALL YOUR  
**PLUMBING & GASFITTING**

CONTACT US ON  
**0800 DAN TAYLOR**  
**021 254 3899**  
admin@dtplumb.co.nz

## Hauraki Property Services



Hauraki Property Services was started in 2019 after the owners, Morgan and Lera moved to New Zealand after travelling extensively. Given their combined experience in the building industry, it was only logical they would start up a trade business. However, they didn't want to be like every other painting company. They set out to build a business that delivers a client focused experience. From the initial contact, where customer service is a priority, to the quality of painting work itself, and even follow up on completion, Hauraki Property Services was quick to develop a reliable reputation.

As Residential and Commercial interior/exterior painters, they have great examples of their work across the greater Auckland area. Projects such as The Cloud on Auckland's waterfront, to the beautiful historical Ferndale House in Mt Albert are great examples of Hauraki Property Services ability to complete complex jobs.

Like all painters, their favourite work is to do interior/exterior painting on architecturally designed new build homes. As well as satisfaction and the joy owners get when they see their home come alive with colour, in some cases it gives them a chance to work with Porter's specialty coatings such as French washes.

Supporting their great work is accreditation with Master Painters New Zealand and the Dulux Accreditation program. If this isn't enough, a quick Google of Hauraki Property Services shows clients are also very impressed by the professionalism of the company with a 5 star rating. If you have some painting work you need done, they should be at the top of your list to call, they are happy to come around and provide a free quote.

Morgan Payne from Hauraki Property Services

020 4 TRADES (872 337)

info@propertyservices.net.nz

**HURAKI PROPERTY SERVICES**

**BEST PAINTING COMPANY**

www.propertyservices.net.nz  
info@propertyservices.net.nz  
020 4 872337

Scan QR code

## Central Landscapes



Get your garden 'Christmas Ready' with Central Landscape Supplies Swanson.

November is the ideal time to refresh those ornamental garden beds with fresh mulch. Not only will it look great when the rellies come to visit-mulch actually helps regulate ground moisture, keeping your plants healthy during the warmer months ahead. We've got options to suit every garden-from stunning Reharvest Black Decorative Mulch to Forest Floor Mulch for that natural look. Give your home-grown Christmas veggies a boost with our Premium Garden Mix. A blend of composted bark, chicken manure, gypsum and slow-release fertilisers, it's perfect for raised gardens and planters. Your citrus trees will appreciate a feed of Dave's Growth Booster Sheep Pellets and you'll have a ready supply of fruit for those summer drinks in the backyard.

Make sure your garden paths are looking their best when the guests arrive. We stock a range of decorative pebbles including white chip, river pebbles and pea metal. For that beachy feel, go for Hoggin. A very fine decorative white chip that compacts down easily, Hoggin is ideal for pathways and entertaining areas when you are looking for semi permeable finish and a stylish white surface.

November is still a good time to sow a new lawn, we can advise you on the grass seed variety that will best suit your location. Our grass seed range includes ProLawn Coastal Blend, which is formulated for sandy soils, or the hard-wearing Lifestyle Blend - ideal for lifestyle blocks. Xmas Hours: Open until 23rd Dec. Closed 24th to 3rd Jan. Open 4th Jan 2025 Central Landscapes Swanson: 598 Swanson Rd, Swanson.

Ph: 09 833 4093

Email swanson@centrallandscapes.co.nz.

Shop online at www.centrallandscapes.co.nz.

**EARTH MOVING CONTRACTOR**  
**BOLER**  
CONSTRUCTION LTD

Driveways, All Drainage, Site Cuts, Property Maintenance, Subdivisions, Horse Arenas, Footings & Drilling, All earth work requirements. Laser Equipped.

**Steve** PH 0274 971 154  
A/H : 411 7177  
E: bolerconstruction@xtra.co.nz  
www.bolerconstruction.co.nz  
Reg Drainlayer: Over 20 yrs Experience





**CENTRAL**  
LANDSCAPE SUPPLIES

# Get your Garden 'Christmas Ready'

Shop in-store or online

**Central Landscape Supplies Swanson**  
09 833 4093 • [swanson@centrallandscapes.co.nz](mailto:swanson@centrallandscapes.co.nz)  
Open 7 Days • 598 Swanson Rd, Swanson  
[centrallandscapes.co.nz](http://centrallandscapes.co.nz)



## Young Learners

### Kidz Kartz Kumeu a fun club for youngsters and ponies



Kidz Kartz Kumeu encourages and teaches life skills such as caring for ponies, self-reliance, self-confidence and resilience in a safe and fun environment.

Sarah Enfield, 12, is a regular at the club where she works with the club's ponies (like Kookies and Kream) and has received her harness racing licence which enables her to race at Alexandra Park. She says that she "loves the variety of ponies, who all have different personalities and are great fun to be around. They are all very cute."

Alexis Grbic, 16, says she joined Kidz Kartz Kumeu about seven years ago after learning about it from a friend. Since joining she has won many cups and ribbons for her

achievements after developing her horse skills through the club.

Kidz Kartz Kumeu competes in regular races at Alexandra Park against similar clubs from around the country and joins in an Easter event at Hawera.

"We wanted all children to be able to take part in this great sport (not just the rich and famous) so started with buying all our own ponies and gear so that parents did not have a large outlay to see if their child liked this sport," says Kidz Kartz Kumeu president Deneece Goldsworthy of Taupaki who developed the club and is supported by husband Murray.

Deneece says Kidz Kartz Kumeu has led many youngsters into full-time work in the equine industry, including a local trainer who was one of the first children to join the club.

The club is based at the Kumeu Trotting Club in Boord Crescent and has been running about 21 years - starting in the 2003-2004 season. They meet every Sunday from 9.30am to about noon to train, care for and drive the ponies (all under 13 hands tall).

New members are welcome to visit.

Check out Kidz Kartz Kumeu on Facebook, view their Alexandra Park races on YouTube (KidzKartz AlexandraPark) or email [kidzkartzkumeu@gmail.com](mailto:kidzkartzkumeu@gmail.com) for more information.



**Enrol Now!**

We are a home-style childcare centre based in Kumeū. We have a team of highly qualified teachers who are passionate about their role in your child's future, and who are committed to providing a premium level of care.

#### Contact us

- 371 Main Road, Kumeū 0891
- [kumeu@omarapeti.net.nz](mailto:kumeu@omarapeti.net.nz)
- [www.omarapeti.net.nz](http://www.omarapeti.net.nz)
- 09-213-4292





# Kōrero Pukapuka (To read) in our World



Language is an essential aspect of our everyday lives, found in everything we read and hear. It's crucial that tamariki (children) are immersed in language from birth, through being spoken and sung to.

At Gumboots Early Learning, our kaiako (teachers) ensure that children engage with literacy's symbols and tools for personal, social, and cultural purposes. This approach helps them gain confidence and competence, express emotions, connect with others, and make sense of their experiences.

There are countless reasons to read to tamariki. Reading nurtures their love of language, which is vital for life long learning. It allows them to access diverse texts, make connections to their world, and sparks their imagination. Enjoyable reading sessions create opportunities for discussion, enhance vocabulary, improve concentration, and strengthen listening skills. Most importantly, it fosters a special bond between the reader and the child, making it a fun experience for both.

Reading to tamariki enriches their vocabulary, exposing them to words not commonly heard in daily conversation. The number of words children encounter dramatically increases with each book read aloud, particularly before they turn five.

Your tamariki cherish your presence and treasure hearing YOU read. Dedicate time daily for shared reading—make it enjoyable! Establish a cosy reading nook, take books outdoors, and bring characters to life with different voices and expressions.

For variety, encourage your tamariki to create their own books to 'read' to you. Explore diverse texts, including picture books, non-fiction, poetry, and comics—tailored to their interests. Use puppets or props to enhance storytelling and engage their imagination.

Investing time in reading with your tamariki pays dividends, enriching their lives and paving the way for success in our world. How will you engage in fun reading with your tamariki today?

Ph: 411 9038



# Aged care

## Kumeu Village Resthome: Where care meets community



We provide luxury resthome, hospital, respite, and specialised dementia care. While we are proud of our ability to deliver high-quality hospital-level care, it's our approach to dementia care that truly sets us apart. We offer personalised, compassionate support for those living with dementia, creating an environment where they can thrive with dignity and purpose.

Our dedicated team follows a Residents' First approach, which prioritises combating loneliness, helplessness, and boredom. We understand the unique challenges faced by individuals living with dementia, and we have tailored our care programmes to ensure their wellbeing and comfort. Our beautiful outdoor spaces, cosy interiors, and engaging activities all contribute to a fulfilling life for every resident.

At Kumeu Village Resthome, we believe that families are an essential part of the care journey, and we encourage you to be involved every step of the way. Whether it's our specialised dementia care or our hospital-level support, we are committed to providing a safe, nurturing environment for your loved one.

At Kumeu Village Resthome, we pride ourselves on offering a warm, community-focused environment where every resident feels valued and supported. Our home is designed to provide not just care but also companionship, ensuring that each person can live a fulfilling and meaningful life.

For more information or to arrange a tour, visit our website at [www.kumeuvillage.co.nz](http://www.kumeuvillage.co.nz), call us at 09 412 9112, or email us at [info@kumeuvillage.co.nz](mailto:info@kumeuvillage.co.nz).





# KUMEU VILLAGE

Luxury Rest Home, Hospital,  
Dementia and Respite Care



09 412 9112

[www.kumeuvillage.co.nz](http://www.kumeuvillage.co.nz)

NEXT DRIVEWAY







## Elder abuse support service available



Visionwest Community Trust in Glen Eden has a new service aimed at supporting older Māori and Pasifika people who may be experiencing elder abuse. Mana Tiaki exists to uphold the mana of the elderly by providing

support to Māori and Pasifika kaumātua and kuia who are experiencing, or at risk of, elder abuse, mistreatment or neglect.

This year as many as one in ten older people in New Zealand will experience some kind of elder abuse and yet it often goes unreported because those affected can feel embarrassed or may not know where to go for help.

Elder abuse can take several forms including psychological abuse, financial abuse (the unauthorised use of money or possessions), physical abuse, neglect (inadequate food or clothing, or lack of social contact or support).

Mana Tiaki, Visionwest's elder abuse response service, provides confidential and compassionate support for kaumātua and kuia who are experiencing, or are at risk of, elder abuse. Support offered includes advocacy and intervention support, wraparound support services (incl. housing, budgeting, kai), and confidential counselling.

Mātanga Oranga, Visionwest's Māori-informed and Māori-based specialised counselling and care service has support therapists trained in supporting those experiencing elder abuse or family members who are concerned about older loved ones.

For more information about Mana Tiaki: Phone, 0800 990 026 or visit, [www.visionwest.org.nz/matangaoranga](http://www.visionwest.org.nz/matangaoranga).



Impacted by the 2023 floods? You are not alone, help is here.

### Visionwest is offering up to ten free and confidential counselling sessions for those impacted by the 2023 Auckland weather events.

Following the 2023 weather events, many West Aucklanders are still grappling with some tough emotions. If you are one of them, here's your opportunity to talk to someone.

You'll receive:

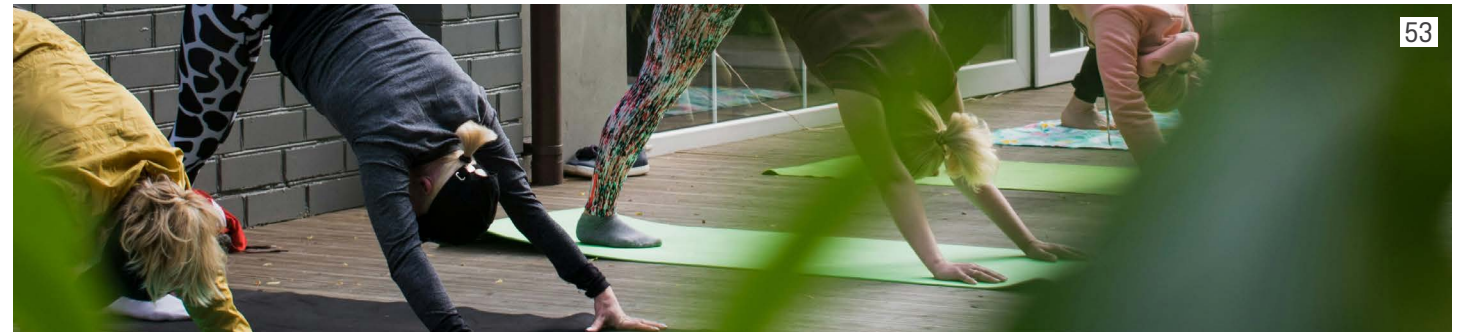
- Professional Counselling
- Individualised Support
- Support for the whole family

We are situated at 97 Glendale Road, Glen Eden. To schedule an appointment or for more information, contact:

**0800 227 343**  
[counselling@visionwest.org.nz](mailto:counselling@visionwest.org.nz)  
[visionwest.org.nz/wellbeing](http://visionwest.org.nz/wellbeing)



**Visionwest**  
 Waka Whakakitenga  
**Wellbeing Centre**  
 counselling and care | Kia Tūmanakotia



## Health & Beauty

### The benefits of physiotherapy for seniors: Promoting health and independence



As we age, maintaining mobility and independence is vital. Physiotherapy can significantly enhance the quality of life for seniors by helping them manage pain and prevent injuries. Our clinic is dedicated to addressing the unique challenges faced by older adults with personalised care.

#### Why does physiotherapy matter?

1. Improved Mobility: Seniors often experience stiffness and a decreased range of motion. Our tailored exercises

aim to enhance flexibility and strength, enabling individuals to regain their mobility and confidence in daily activities.

2. Pain Management: Chronic pain from conditions like arthritis can be debilitating. Our physiotherapists employ various techniques, including manual therapy and customised exercise programmes, to alleviate pain and improve comfort.

3. Fall Prevention: Falls pose a serious risk for older adults, often resulting in significant injuries. Our physiotherapy programmes include balance training and strength-building exercises that can significantly reduce fall risk and promote stability.

4. Post-Surgery Rehabilitation: For seniors recovering from surgery, physiotherapy is crucial for restoring strength and mobility. Our team creates individualised rehabilitation plans to ensure a safe and effective recovery process.

5. Enhancing Quality of Life: Physiotherapy also contributes to mental well-being. Regular physical activity can uplift mood, reduce anxiety, and encourage social interactions, all essential for maintaining overall health.

#### Get Started Today

If you or a loved one could benefit from physiotherapy, we encourage you to reach out. Our compassionate team is committed to helping seniors regain their independence, manage pain, and lead active lifestyles. Together, we can positively impact the lives of older adults in our community.

For more information or to schedule an appointment, please call 0272640003 (Hobsonville) or 0273136036 (Riverhead).

**riverhead**  
 PHYSIOTHERAPY + PILATES  
 FREEDOM IN MOVEMENT

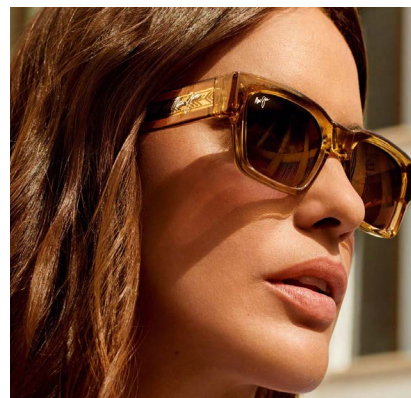
0273136036  
[physio@riverheadphysio.co.nz](mailto:physio@riverheadphysio.co.nz)  
 1058 Coatesville-Riverhead Hwy  
[www.riverheadphysio.co.nz](http://www.riverheadphysio.co.nz)

**hobsonville**  
 PHYSIOTHERAPY  
 FREEDOM IN MOVEMENT

09 416 4455 / 0272640003  
[physio@hobsonvillephysio.co.nz](mailto:physio@hobsonvillephysio.co.nz)  
 124 Hobsonville Rd, Hobsonville  
[www.hobsonvillephysio.co.nz](http://www.hobsonvillephysio.co.nz)



## 5 ways to turn prescription glasses into sunglasses



Your eyes don't always love summer as much as you do! How can you protect them from UV damage and glare?

1. Transition lenses go dark in the sun and clear again indoors. What an easy and convenient way to have your glasses double as sunglasses.

2. Did you know we can make prescription sunglasses here at For Eyes? Choose from our sunglass range, including Maui Jim, RayBan, O'Neill and more and have customised prescription lenses fitted to them. We have sports/cycling, safety-eyewear and fashion ranges - you'll really enjoy summer in style with this option.

3. If you want to relax outdoors with a book over the summer, why not turn your reading glasses into sunglasses with a simple sun-clip from our ready-made range? We have a template of available styles and sizes and to help you choose the one that best matches your current glasses. Trust us, it will look so much better than perching your sunglasses on top of your reading glasses.

4. If you're buying new glasses, check out our frame models that come with their own perfectly matching sun-clips. These clips are unobtrusively held in place with tiny magnets so your glasses will look great with or without the clip in place, and it's easy to take on and off as needed.

5. If you like the sun-clip idea but have chosen a frame that doesn't come with a clip, we can even order a customised sun-clip to fit. Made in NZ, these little rimless beauties have tiny magnets inserted to hold them onto your eyewear.

So don't squint into the summer sun this year. Bring your eyes to For Eyes and sort out a glare and UV protection strategy before those long sunny days are upon us.

### Take Your Eyes to For Eyes!

- Advanced scanning equipment for early detection of cataract, glaucoma and macular degeneration
- Specialty assessment of child and adult reading difficulties
- Specific-tint lenses for Irlen Syndrome
- Lenses to correct red-green colour-blindness



Phone: 09 412 8172  
email: foreyes@foreyes.nz  
website: www.foreyes.net.nz

Matthew and Molly Whittington, optometrists in the Kumeu Village since 1993  
Open 9-5 weekdays, Kumeu Village, 90 SH16 Kumeu

## Swan Skin and Nutrition



Recent research highlights the intricate connection between gut health and skin health, revealing how an inflamed gut can lead to skin issues. Factors like poor diet, stress, and

lifestyle choices can compromise the gut, resulting in chronic inflammation or dysbiosis. This internal imbalance can manifest externally, leading to conditions such as eczema, acne, and psoriasis. The skin, our largest organ, acts as a barometer for internal health. When the gut's inflammatory pathways are not addressed, toxins and inflammation can seep through the skin, signaling that the body is overwhelmed.

Continuing to irritate an already inflamed gut is likened to picking at a scab—it hinders healing and can leave lasting scars. Just as disturbing a healing wound can lead to infection, consistently aggravating the digestive system impairs its ability to recover. This ongoing turmoil not only prolongs digestive issues but also worsens skin conditions.

To foster true skin healing, it's essential to treat the gut with care, allowing it to restore balance rather than perpetuating irritation. Prioritising gut health through a balanced diet and mindful living is vital for clearer skin and overall wellness, breaking the cycle of inflammation and promoting healing from within. Booking a consultation with Sarah Tumulty, Functional Skincare Practitioner and Nutritionist, can help you address skin concerns while focusing on internal healing. Together, you can work towards restoring balance, ensuring that both your skin and gut health thrive, leading to improved overall well-being.

Sarah Tumulty. 49 Main Road, Kumeu swan.  
skinandnutiriton@gmail.com

SWAN SKIN WELLBEING & NUTRITION

### SKIN INFLAMMATION AND GUT HEALTH

Just as picking a scab or spot can prolong healing and lead to further irritation on your skin, continuously aggravating your gut with unhealthy foods or habits can hinder its recovery and overall health - including your skin. Both actions interfere with the body's natural healing processes, leading to more discomfort and potential long-term issues. It's important to nourish and protect both your gut and your skin to promote healing and well-being.

Understanding functional healing for gut and skin health

www.swanskinandnutrition.com  
Sarah Tumulty  
Functional Skincare Practitioner & Nutritionist



## “The prep is worse than the Colonoscopy!”



Listening to our patients' feedback of getting themselves ready for a Colonoscopy, this is not an uncommon remark and sometimes, the real reluctance for having the short day-stay endoscopy procedure itself.

So why do patients need to go through a “bowel preparation” before having a Colonoscopy?

This is because the large bowel or colon needs to be clear or as empty as possible so that your Endoscopist or the doctor performing the procedure can have the best views of your colon to make a diagnosis and to minimise the risk of any polyps (pre-cancerous growths) or lesions from being missed.

Here at Waitemata Endoscopy (WE) optimising the best outcome for the individual patient is a priority for us. Every referral is triaged by our Senior Endoscopy Nurses first to ensure that our friendly Customer Service team asks the relevant questions to determine the right amount of “bowel prep” for adequate cleansing based on your own bowel habits. In addition, your medical history as well as the list of medications you take will be taken, to provide any individual advice if required. This is usually done over the phone, so it is handy to have a list of your regular medications with you.

To support good bowel cleansing, a low fibre diet, which reduces the volume of your bowel movements, is usually started 3 days prior to a Colonoscopy. At times, depending on the individual, this may need to be longer to ensure the best outcome for the patient. This involves avoiding certain foods such as wholegrain bread, nuts, seeds, and skins. While this may sound a bit restrictive, there are still plenty of food options left during this short time, and we have developed patient resources to guides you through this.

How can you offer a Colonoscopy in just 7 working days of a referral, that almost seems too quick?

We have been working really hard to solve the problem of timely access. When you let us match you with the availability of our 17 experienced Specialists across the Waitemata Endoscopy Group without specifying a specific doctor, we can schedule most standard Colonoscopy appointments within 7 working days of a GP, Specialist referral or self-referral. All of our Specialists have had international training and extensive experience, which makes for a complete service for all Gastrointestinal disorders and diseases, or symptoms which require you to have a Colonoscopy for peace of mind or early detection and diagnosis.

At Waitemata Endoscopy, taking a proactive approach to your gut health is easy, and our nurses, as well as doctors, are one of the most complimented parts of our service, as we know first-hand, the impact to patients of providing exceptional endoscopy care in our community.

Sihaam Bagus

Charge Nurse, Waitemata Endoscopy

To see the video tour of our clinics, please visit [www.waitemataendoscopy.co.nz/locations](http://www.waitemataendoscopy.co.nz/locations)

# WE

are dedicated to exceptional patient care

We have been serving the Waitematā community for over 16 years, offering access to a group of experienced Gastroenterologists and Surgeons.

Bringing you timely access to Colonoscopy, Gastroscopy and advanced procedures closer to home *where care meets excellence, as your local Endoscopy Experts.*

Talk to your GP about a referral to the Waitematā Endoscopy Group, or you can self-refer at:

[www.waitemataendoscopy.co.nz/referrals](http://www.waitemataendoscopy.co.nz/referrals)

*WE have you covered from 'Top to Bottom'!*

WAITEMATA  
ENDOSCOPY

a joint venture with

Southern Cross  
Healthcare

Scan to find out more  
Or call us on (09) 925 4449

URGENT APPOINTMENTS AVAILABLE



## Sun safety



As summer approaches, we need to be serious about sun safety. Skin cancer is the most common cancer in New Zealand and Australia, and

over 90% is caused by too much exposure to ultraviolet radiation from the sun. To protect yourself and your whānau, the first priority should be physical protection. Between the hours of 10am - 4pm be sun smart (slip slop, slap and wrap as recommended by the Cancer Society cancer.org.nz), including wearing sunglasses of an adequate standard. Don't use sunbeds. Use a broad-spectrum sunscreen, preferably Sun Protection Factor (SPF) 50, applying it generously (about a teaspoon (5ml) for each arm, each leg, face, neck and ears, and don't forget the backs of the hands) and allow at least 20 minutes for it to absorb before going outdoors. That seems a lot, so wearing sun-protective clothing and a hat should be preferred, and spend time in the shade. Re-apply every two hours, or more frequently if swimming, sweating or towel-drying. Remember to check the expiry date on the sunscreen.

Be aware of sunscreens containing ingredients like oxybenzone and octinoxate, which are harmful to marine life and coral reefs. Choose sunscreens that are labelled "reef-safe" or contain zinc oxide or titanium dioxide. Since New Zealanders are encouraged to use sun protection throughout much of the year, some people might worry about Vitamin D deficiency. It's generally recommended

to balance safe sun exposure with sun protection, particularly in summer, while still aiming to get some unprotected sunlight exposure during early mornings or late afternoons.

## Staying healthy after 40: essential tips



As we age, maintaining good health becomes increasingly important. Individuals over 40 often experience changes in metabolism, muscle mass, and overall wellness, making it vital to adopt proactive health strategies.

Here are some effective tips for staying healthy after 40:

### 1. Balanced Nutrition.

Eating a well-rounded diet is crucial. Focus on: Whole Foods: Incorporate plenty of fruits, vegetables, whole grains, and lean proteins. Healthy Fats: Include sources of omega-3 fatty acids, such as fish, nuts, and seeds. Limit Processed Foods: Reduce sugar, salt, and unhealthy fats to lower the risk of chronic diseases.

### 2. Regular Physical Activity

Exercise is key to maintaining strength, flexibility, and cardiovascular health. Aim for: Aerobic Exercise: Engage in at least 150 minutes of moderate-intensity aerobic activity per week, such as brisk walking or cycling. Strength Training: Incorporate resistance exercises at least twice a week to ensure your muscles maintain their strength.

### 3. Maintain a positive attitude

If you review your goals and how you're spending your hours, you'll become more intentional in your daily life and be able to meet your long-term ambitions. Make a habit of gratitude. It's good for the heart and soul. Have a monthly date night. Keep good company. Compliment people. Laugh and smile. Schedule fun first, before work. These suggestions can help replenish who we are.

Disclaimer The information provided in this article is for informational purposes only and is not intended as medical advice. Always consult with a qualified healthcare professional before making any changes to your diet, exercise routine, or health care regimen.

**Zash Hair**  
 HAIR BY CARLA  
 77 Waitakere Road, Waitakere, Auckland 0614  
 Phone: 021 814 663 zashhair

# Area Columnists

## Key North-West projects fast-tracked



**By Cameron Brewer**  
 MP for Upper Harbour

The Government has announced the fast-tracking of 149 projects with significant regional or national benefits.

Importantly, they include the SH16 Northwest Rapid Transport Corridor, which is a dedicated busway between the city centre and Brigham Creek, and the Northwest Alternative Highway, serving as a Kumeu bypass.

Consents for these projects stand to be fast-tracked under our Fast-track Approvals Bill, which will supercharge the economy, create jobs, and deliver growth for Upper Harbour and the wider Auckland region.

These projects will revitalise New Zealand's economy after years of slow growth. Among them are 44 housing developments to address the housing crisis, enabling the construction of up to 55,000 new homes in key growth areas.

Seven aquaculture and farming projects will strengthen partnerships with iwi and boost Māori development, contributing up to 143,000 tonnes of output per year.

The list includes 43 infrastructure projects, expected to deliver up to 180km of new road, rail, and public transport routes, and 22 renewable electricity projects, adding up to 3 gigawatts of generation capacity to New Zealand's electricity system.

Mining projects will contribute to doubling the value of mineral exports by 2035, creating highly skilled jobs and boosting regional economies.

Successive governments have allowed red and green tape to hinder economic growth, delaying much-needed infrastructure and housing projects.

Fast-track cuts through this bureaucracy, enabling projects of national and regional significance to proceed more quickly and efficiently.

However, this initiative is not just about speed. It's about creating high-paying jobs, addressing long-standing housing shortages, and closing infrastructure gaps.

Authorised by Cameron Brewer, 102c Hobsonville Road, Hobsonville, Auckland

## Over 20,000 Aucklanders make use of \$50 public transport deal

In the 12 weeks since Auckland Transport introduced its \$50 seven-day fare cap, over 20,000 Aucklanders have made use of the deal. It's part of a wide range of initiatives AT is rolling out to encourage Aucklanders to get on board public transport. Others include contactless payments

**DT DENTURE CLINIC**  
 DENTURE SERVICES AND REPAIRS

**Attention Denture Wearers**  
**Expert Treatment,**  
**Individual Needs**

**We offer:**

- Full Dentures
- Partial Dentures
- Same Day Relines, Repairs and Tooth Additions
- Mouthguards
- WINZ Quotes

*Make a booking to discuss your FREE treatment plan.*

67 Brigham Creek Road, Whenuapai  
 www.dtdentureclinic.co.nz  
 P: (09) 416 5072

Made in NZ with imported materials

**Cameron Brewer MP for Upper Harbour**

(09) 416 3249  
 UpperHarbourOffice@parliament.govt.nz  
 102c Hobsonville Rd  
 CameronBrewerMP

**National NZ**  
 Authorised by Cameron Brewer, Parliament Buildings, Wgtn.





and improving bus priority at traffic lights. The fare cap means that travel on AT buses, trains and inner harbour ferries is capped at \$50 over seven days.

Mayor Wayne Brown championed the fare cap and is pleased to see Aucklanders getting behind it.

“This is a great example of how things should work, with council setting strategy and direction and AT implementing it.”

Public transport customers do not need to do anything to start receiving the seven-day cap beyond tagging on and off with their AT HOP card as usual. They will know they have reached the cap when they see a \$0.00 fare on the HOP card reader.

Some people are saving upwards of \$20 per week. The price certainty makes taking public transport more attractive and budgeting easier, which is welcome in a cost-of-living crisis.

The fare cap period runs for a week, expiring at 11:59 pm seven consecutive days after the initial HOP card tag on. Included services: All AT buses, trains, inner harbour ferries and AT Local. Inner harbour ferry services are Bayswater, Birkenhead, Te Onewa Northcote Point and Devonport. Excluded services: Mid and outer harbour ferries, commercial ferries (including Waiheke services), Te Huia. For more information visit [at.govt.nz](http://at.govt.nz)

## Art of Repair

I darned a sock today. It was my first ever attempt. It's lumpy and not very pretty, and my talented seamstress grandmother would turn in her grave if she saw it. But it's on the heel where no-one will see it. I can wear my favourite socks again, and I am so proud.

The art of repair is almost a lost art. Many of the products



we purchase are not made to last very long, and when they break we throw them away and buy new ones. In the old days, things were more precious, often hand-made, and were repaired when they broke. This is a far more sustainable way to live, and we have moved far away from it, filling our landfills with junk in the process.

But repairing something can be creative and satisfying - sewing on a button, polishing scuffed shoes, patching a hole in your jeans. For inspiration, google 'sashiko', the Japanese style of visible mending, or 'creative mending'.

Not only that, working with your hands is good for your brain and your mood. Psychologists who have studied this have found that doing menial repetitive tasks with your hands gives your mind a chance to relax, which gives your brain the downtime it needs to problem solve or come up with new ideas, and gives us feelings of pleasure. Using our hands as part of survival has been a human trait for thousands of years.

YouTube is teeming with videos on how to fix things. Sometimes though, it's just too hard or you haven't got the right tools. Check out the nearest Repair Café: <https://www.repaircafeaotearoa.co.nz/>. These are held regularly at community centres, and bring in skilled local volunteers to fix everything from bikes to clothes, shoes to toasters, for free, while you sit with a cuppa.

Ever tried taking something to be repaired, only to find out it's not 'repairable'? There's a group working to get

**Paul Miller**  
Freedom Drivers Hobsonville

- Hospital & Medical Appointments
- Specialist Treatments
- School Transport
- Airport Transfers
- Shopping & Social Trips

+64 021 321 869 | (09) 302 2377  
[hobsonville@freedomdrivers.co.nz](mailto:hobsonville@freedomdrivers.co.nz)

ACC Approved • Total Mobility Cards • Eftpos

**RYAN JACKSON**  
M: 027 498 6202. E: [ryan@treehouseprint.co.nz](mailto:ryan@treehouseprint.co.nz)  
P: 09 810 8609.  
PO Box 133, Kumeu 0841 Auckland

the law changed so that manufacturers have to provide spare parts and repair manuals for their products: <https://www.repairnetworkaotearoa.org.nz/right-to-repair>.

Darning the hole in my sock isn't going to save the planet, but it's been very satisfying and has made me think.

## Legacy workshop series reimagined: He Kete Rauemi



In an ever-changing society, the need for knowledge and understanding across cultural competency, diversity and inclusion has never been greater. So when we are working in the community, for the community, how do we ensure our people working at the grassroots have the capacity and capability to meet the community's needs?

After the Covid-19 pandemic, quickly followed by the devastating floods across West Auckland in 2023, the team from Community Waitākere recognised the urgent need to address the needs of the people of West Auckland. So the workshop series He Kete Rauemi was born.

Community Waitākere Kai Whakawhanake Hapori, Aroha Te Namu (Ngāpuhi) explains.

“After hosting three wānanga, we identified the need for indigenous practices to community development and engagement, particularly for Māori and Pasifika. People working at the grassroots want to embed cultural safety in their mahi, to best understand and meet the needs of the people of West Auckland.”

**plus points**

join our loyalty program today for great benefits!

Join today by collecting your card from any of our stores or venues.

[thetrusts.co.nz](https://thetrusts.co.nz) The Trusts

Scan here to view the list of stores and locations.

Covering topics such as Māori, Pasifika and Migrant approaches to community development, creating a culture of care, Te Tiriti o Waitangi and creating a culturally safe practice, He Kete Rauemi is a place for people to learn, share and be curious in a shared environment.

Aroha continues. “When people feel safe and are supported, they feel comfortable to share with one another. There was a sense of relief in the room, that they weren't the only ones wanting to learn more. People let their walls down and asked uncomfortable questions, deepening their understanding and knowledge and West Auckland will be a better place for it.”

This workshop series is possible thanks to funding from Henderson Massey Local Board, Whau Local Board and Waitākere Ranges Local Board. Community Waitākere will be continuing the series in 2025, for more information please visit [Community Waitākere \(communitywaitakere.org.nz\)](http://CommunityWaitakere.org.nz)

## Ladies Who Lawn



A local West Auckland Landscaping and Garden service were in the privileged position to have received a grant from The Cyclone Gabrielle trust in response to a proposal and plan we have put together and have been undertaking in the Rānui Waiwhauwhau Paku Stream.

As we know the Cyclone and the Auckland Floods over the last two years caused great devastation throughout Auckland. Unfortunately lower socioeconomic areas such as Rānui wore the brunt of the devastation.

Things are still tough for whānau in regard to not only the effects of the flood, but also the financial viability around regathering and moving forward after such events. We have designed an educational programme taking place over the next few months that includes collaborating with Birdwood School and their tamariki.

Our team has been working through cleaning up the riverbed that was FULL of rubbish and debris over the past few weeks in preparation for planting out natives with tamariki from Birdwood. Our intention is to create a space that not only reduces the potential



risk of flooding devastation to the school and bordering properties, but to ensure tamariki have the knowledge and hands on experience to be able to take responsibility for out awa long term. We have been gathering a range of community sponsors who have allowed this plan to come to fruition and we know we will achieve great outcomes for our whenua and tamariki alike.

We will of course be looking for further funding to be able to complete restoration on the whole stream and we know that media recognition will assist us in being able to keep up the fabulous mahi that we are currently doing. We have a strong community kaupapa to spread through other local businesses and schools to allow this kind of work to continue.

www.ladieswholawn.com +64210660608 (Rosie)

## The ongoing Israeli – Palestinian conflict



Israel/Palestine is a small area: approximately 10,000 square miles, or about the size of Wales. Yet the events on this tiny piece of land have a massive impact not only on the Middle East region

but on world affairs. There runs through the city of Jerusalem the major fault line between two of the earth's 'civilisation plates,' Islam and the West. When we have found a way of establishing peace in the Holy Land, we shall have some chance of creating a stable, global peace.

At its monthly meeting on the 24th of November, the Discoverers informal church will be focusing on the Palestinian-Israeli conflict: the Jewish and Palestinian claims on the disputed territory, the creation of the Jewish State in 1948, the displacement of Palestinians to Gaza and parts of the West Bank, the recognition of Palestine as a sovereign state, the World Council of Churches statement on the conflict issued in November 2023.

Discoverers informal church meets in the Baffin lounge, Headquarters Building 214 Buckley Avenue, Hobsonville Point from 3-30pm to 4-30pm.

For further information contact Barry Jones. Phone 0220683873 Email. beejaynz05@gmail.com

## Swapping Cars



A natural progression to ever becoming a NZ Police Officer is to first get behind the wheel a Community Patrol car to enhance your chances of putting on the blues and driving that Skoda or Holden Police car.

Community Patrols New Zealand in conjunction with the New Zealand Police has developed a training programme called Pathway To Police - P2P where those considering a career with the NZ Police engage in the course led by CPNZ.

Twenty individuals have recently been accepted as a NZ Police recruits and have started their 20 week training at the Royal NZ Police College in Porirua, Wellington, after joining the CPNZ programme.


Leading up to sitting their final NZ Police acceptance exams, the candidates undergo a series of training with CPNZ including completing modules, patrolling, observation, vehicle accident attendance, missing person searches, community events, other agency interaction and reporting just to name a few as well as received some experienced mentoring.

The West Harbour Community Patrol has been fortunate enough to have five of these Pathway applicants join their patrol. The training is underway and hopefully in early 2025 these Police hopefuls will be changing cars.

Should you be considering a career with the NZ Police, give your CV a boost by joining the CPNZ P2P programme. Email p2p@cpnz.org.nz or if you just want to give back to your community email join@cpnzwestharbour.org.nz

John Cowsill

+64 21 2800700



# Fraser Dental

General dentistry & Orthodontics

1 Wiseley Road, Hobsonville 09 416 5050  
www.fraserdental.co.nz



Free Property Advice  
www.property-hub.nz

## Choosing the right waterblaster with STIHL SHOP Westgate

Waterblasting is one of the fastest and most effective ways to clean outdoor areas such as your deck, driveway or house. They are also great to wash down a muddy mountain bike, or to clean your outdoor furniture. Cleaning with a waterblaster instead of a hose can also reduce water consumption (and it does a better job)

### Size

As is the case for all outdoor gardening power tools, bigger is not always better. This is important for waterblasters and pressure washers because, for example, using too much pressure on something like wood, stucco or plaster can cause damage to the surface.

### Work

Smaller size models are more suited to general property maintenance such as washing down your muddy mountain bike, car or deck. If you are looking at washing down your house, concrete floors, or even unblocking drains, you should consider a medium size model. Larger models are great for heavy-duty jobs such as cleaning large machines, long driveways, or even cleaning professionally.

### How Often

Home users generally use their waterblasters 6-12 times a year to complete small cleaning jobs, if this is the case an entry level model is all you need. If you use your machine more often it might be a good idea to invest more to gain extra features and convenience and well as greater PSI and water flow.

### Power Source

If you have easy access to power supply and can finish your cleaning job without having to move around too much a quiet, compact electric waterblaster could be the right choice. In comparison battery and petrol powered machines will go anywhere, with petrol offering higher pressure, flow and durability. All that is required with a petrol waterblaster is a reliable water supply. Alternatively, you can use water from a bucket to run STIHL's new battery models.






54 Main Rd Kumeu PH: 412 8592 OPEN MON-SAT

**NOW AT TWO HANDY LOCATIONS FOR EXPERT ADVICE & SERVICE**

15 Kakano Rd Westgate PH: 930 9999 OPEN 7 DAYS

### ELECTRIC WATERBLASTERS FROM \$229\*

SAVE \$30

I'M WORTH AT LEAST TWICE THAT.



**UNEXPECTEDLY AFFORDABLE**  
\*T&C's apply. Offer ends 02 December 2024.

15 Kakano Road  
Ph: 930 9999  
OPEN 7 DAYS

STIHL SHOP  
WESTGATE

### Nozzles & Accessories

STIHL's waterblasters come with a selection of nozzles, like a fan jet nozzle to cover larger areas more quickly or a rotary nozzle to concentrate power on tough dirt. There are also a range of brushes for cleaning delicate surfaces and patio cleaners for cleaning large flat surfaces quickly and more efficiently.

To find out more about STIHL's waterblaster range, visit Pat, Mo, Ryan and the team at STIHL SHOP Westgate. They're a handy drop-off location for all your small engine servicing requirements too.

**STIHL SHOP Westgate is open Mon-Fr 8.30-5, Sat 9-3, Sun 10 - 3**



114 Hobsonville Road, Hobsonville, Auckland  
Phone 09 416 7227 • Email [manager@hobsonvillersa.org.nz](mailto:manager@hobsonvillersa.org.nz)

We welcome all Members and guests of reciprocal rights clubs.  
New members welcome to join at any time.  
Darts, Pool & Gaming Lounge available.

OPEN Wed - Sun 3pm to close.  
Dining Room open Wed - Sun 5pm to 8pm, group bookings welcome, lunch group bookings for 20 plus by arrangement

- Camper Vans welcome to stay (bookings essential)
- Facilities available for private functions, work meetings, small conferences

**Contact Manager for further information & costs**

THE SMALL RSA WITH THE BIG HEART





## Health and Safety Consultation process commenced



The Health and Safety at Work Act 2015 is the principal piece of legislation defining the statutory obligations of New Zealand business in relation to the safety and welfare of their employees.

A number of regulations have subsequently been created to implement the provisions of the act including Health and Safety at Work (Hazardous Substances) Regulations 2017.

The principal focus of responsibility and action throughout the legislation is the person conducting a business or undertaking (PCBU) rather than the corporate business entity.

The Health and Safety at Work Act - 2015 was enacted in part on 5 September 2015 and is now over 8 years old.

The aim of the Health and Safety at Work Act (HSW Act) was to reduce New Zealand's workplace injury and death toll by 25% by 2020 and reverse the trend of ongoing unacceptable high rate of deaths, serious injuries and health hazards occurring in New Zealand workplaces.

Unfortunately, it has not delivered on the expected outcomes we hoped for. We still have a workplace health and safety record that has not improved and is twice as bad as Australia's and three times that of the U.K. (on a per capita basis).

In a response to this situation, the new coalition Government has signaled a review of the Health and Safety at Work Act - 2015.

The Minister of Workplace Relations and Safety Brooke van Velden has said :- "Where we have to follow rules to keep ourselves or others safe, those rules should be clear, sensible and proportionate to the risk."

She has also said and we quote "The actions businesses and workers need to take to protect health and safety should be appropriate and meaningful, rather than just another tick-box exercise."

If you have any concerns about this topic or other Health and Safety matters, why not contact me, John Riddell, by emailing [securo4@securo.co.nz](mailto:securo4@securo.co.nz) or checking out the Securo website, [www.securo.co.nz](http://www.securo.co.nz)? We can also advise on hazard management and provide access to specialist health professionals who provide health monitoring services.



Businesses must now have an effective Health and Safety culture with an ever-increasing personal liability for Business Owners, Managers, and exposure for Company Directors, Trustees, and members of Governing Entities.

Contact Securo's John Riddell, phone 0274 779 750, for practical advice, tools, and solutions for an effective workplace Health and Safety plan.



[www.securo.co.nz](http://www.securo.co.nz) 0800 55 33 44

securo

**Westgate**   
 MEDICAL CENTRE  
 Westgate Shopping Centre, Maki street

**Urgent Care Clinic**

**Open 7 Days  
 8am to 8pm**

**For all urgent medical  
 and trauma needs**

**Xray, Pharmacy, Physio on site**

**833-3134**

[www.wgmc.co.nz](http://www.wgmc.co.nz)

# We're hiring

## Sales Agent

### Minimum 2 years experience

Country Living Realty Limited t/a Raine & Horne  
 Kumeu-Hobsonville Licensed REAA (2008)  
 Contact: Graham McIntyre 027 6320421

**Raine & Horne**





# JOIN US AT OUR WALK IN WEDNESDAYS

Join us any Wednesday in November and experience the Ryman lifestyle that awaits.

Learn about our living options, tour our show homes and discover the wonderful amenities on offer.

We look forward to seeing you there.

**EVERY WEDNESDAY  
10AM - 3PM**

To find out more visit  
[rymanhealthcare.co.nz/events](https://rymanhealthcare.co.nz/events)

